



# RECRUITMENT & TALENT





**A pool of exceptional and available talent**



# RECRUITMENT AND TALENT in PARIS REGION

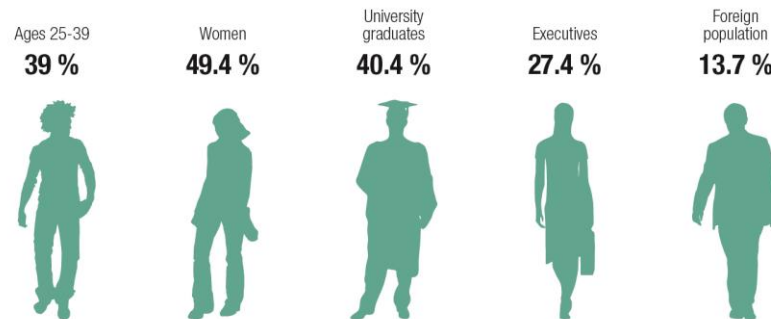
Benefits from :



**A large labor pool of talented and experienced top executives**

- **35%** of French **executives**
- **37,5%** of French **R&D employees** are located in Paris Region

## CHARACTERISTICS OF THE WORKING POPULATION IN PARIS REGION

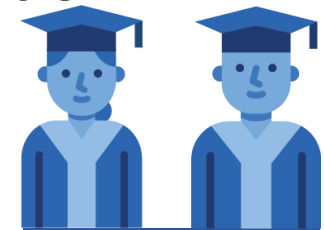


© IAU idF 2019  
source: Insee, data 2015 IAU



**World-class research universities and business schools**

→ **Europe's largest pool of students and PhD candidates**



**707,000 students**

(Insee, 2017)

including **385,000** in Paris Region's **public universities** **26,200 PhD Students**

**16** Public universities  
**70** "Grandes Ecoles" (elite schools), engineering and business schools



**SAVE THE DATE**  
for the major Career Fair event in PARIS REGION

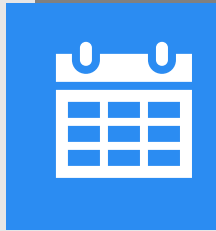
## Our offer



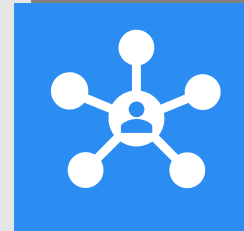
**Help you define employees' profiles and evaluate local salaries and fees**



**Find the right ecosystem for your recruitment**



**Share with you the calendar of the main job career fair in Paris Region**



**Connect your company with relevant recruitment partners**





## Find the right ecosystem for your recruitment

- **Introduction and mobilisation** of the key public and private partners
- **Scheduling, attending and coordination** of the meetings with :

- Engineering Schools
- Business Schools
- Universities
- Alumni
- Headhunters
- Job Boards
- PhD

