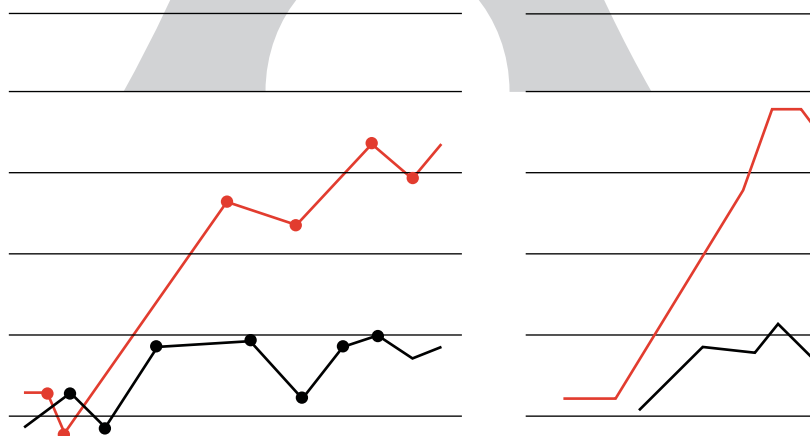
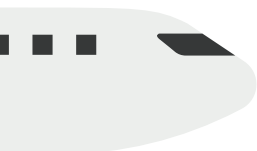
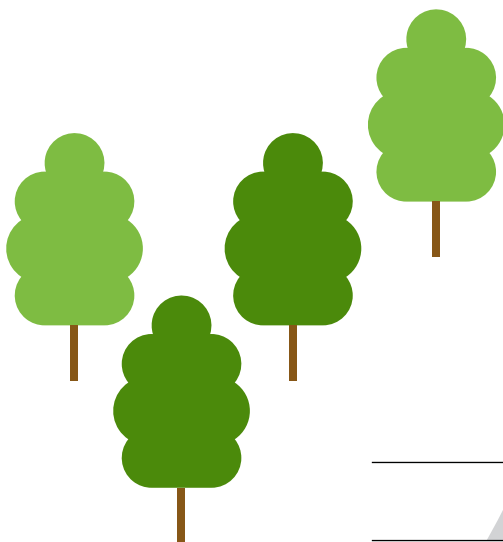
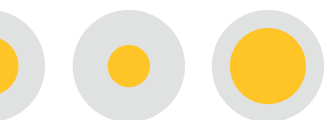
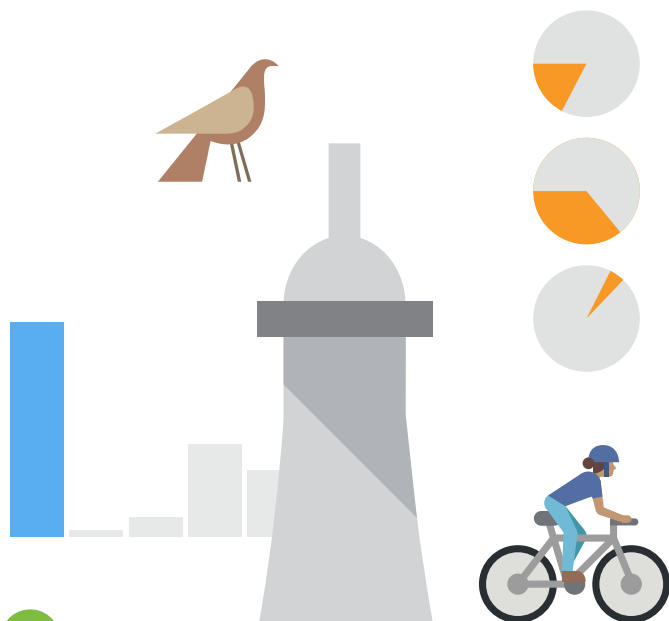
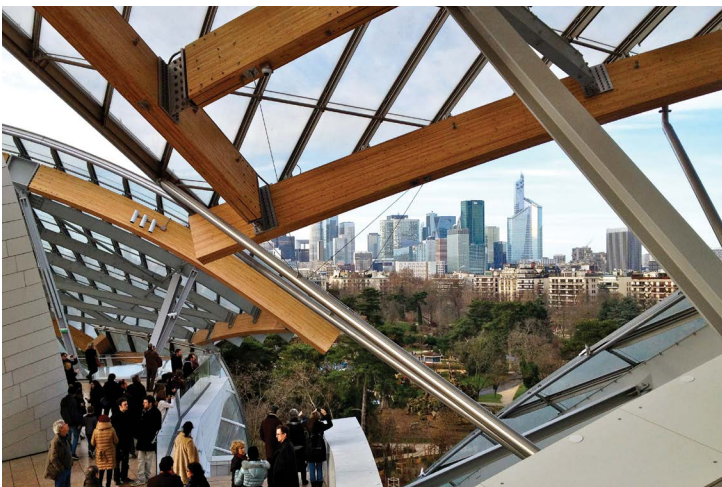


# Paris Region Key Figures 2019







Campus © École polytechnique - J.Barande - Caillebotte House - Yerres © CRT IDF / Tripelon-Jarry Sébastien Erras - BNP Paribas © V. Gollain / IAU idF - Vaux-le-Vicomte Castle © CRT IDF / Tripelon-Jarry - Pompidou Center Fountain © CRT IDF / ATF / Ooshot / Capelle-Tourn - © École polytechnique - J.Barande - La Defense business district from Louis Vuitton Foundation - Frank Gehry © F. Humbert - Rungis International Market © C. Tarquis

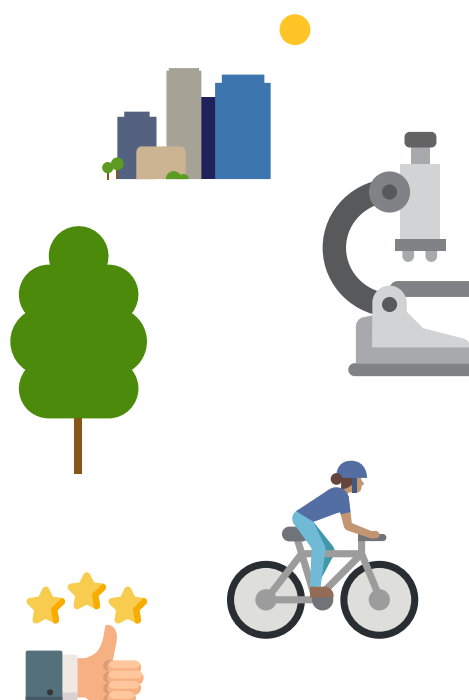


# Welcome to Paris Region, home of business opportunities

Paris Region Key Figures 2019 lays out a panorama of the region's economic dynamism and social life, positioning it among the leading regions in Europe and worldwide.

With its fundamental key indicators, the brochure "Paris Region Key Figures 2019" is a tool for decision and action for companies and economic stakeholders. It is useful to economic and political leaders of the region and to all those who want to have a global vision of this dynamic regional economy.

Paris Region Key Figures 2019 is a collaborative publication produced by Paris Region Entreprises, the Paris Île-de-France Regional Chamber of Commerce and Industry, and the Paris Region Urban Planning and Development Agency (IAU île-de-France).





Jardin suspendu © Nouvelle AOM / Ida+

	<b>Welcome to Paris Region</b>	<b>5</b>
	<b>Overview</b>	<b>6</b>
	<b>Population</b>	<b>8</b>
	<b>Economy and Business</b>	<b>10</b>
	<b>Employment</b>	<b>16</b>
	<b>Education</b>	<b>18</b>
	<b>R&amp;D and Innovation</b>	<b>21</b>
	<b>Real Estate</b>	<b>24</b>
	<b>Transport and Mobility</b>	<b>26</b>
	<b>Logistics</b>	<b>28</b>
	<b>Meetings and Exhibitions</b>	<b>30</b>
	<b>Tourism and Quality of life</b>	<b>32</b>



# Paris Region, a dynamic and forward-looking region

Standing at the crossroads of European and worldwide trade, Paris Region is Europe's #1 economic and innovative region.

## Paris Region is part of:

- The European Union
- The Schengen area
- The Eurozone

## Its main assets

### A dynamic and forward-looking region

Paris Region is a truly global region which accounts for **23.2%** of France's workforce, **30.5%** of national GDP and **40.4%** of the country's researchers.

**55%** of residents are under the age of 40. This young and steadily growing population is not only attracted by the region's economic opportunities but also by the quality of life offered.

Economic and demographic indicators point to a bright future for the region's development.

### A smart, talented workforce

Large, well-educated, international workforce: **6.3 million jobs**, **36%** of all French executives

Europe's largest concentration of higher education students: **706,842 students** (**26.4%** of students in France),

World-class engineers, researchers, Fields Medals, Abel and Nobel prizes,...

### A business and innovation powerhouse

The highest GDP in the European Union (EU28) in billions of euros.

A vibrant exchange between Europe's highest concentration of Fortune 500 corporations, corporate headquarters, SMEs, trailblazing startups, world-class competitiveness clusters.

**#2** worldwide destination for international meetings

The leader in Europe for R&D talent and spending

Internationally recognized technical and scientific skills (top business, engineering and specialized higher education institutions, engineers, researchers...).

### Europe's largest scope of real estate solutions

Attractive, diversified and very competitive real estate, with new office districts and business parks, as well as the opening of coworking spaces, "startup factories"...

### Highly-diversified sectors of excellence

Paris Region is renowned for its highly diversified economic landscape and sectors of excellence, including biotechnology, nanotechnology, telecommunications, 3D animation, the aerospace and automotive industries...

The Paris Region's diversified economy is buzzing with top-ranked high-tech clusters and research centers. This unique landscape generates exciting opportunities for cross-sector collaborations.

### World-class infrastructure

**3** international airports, high-speed rail and an ever-expanding urban subway system thanks to the Grand Paris Express project, the largest urban renewal project in Europe (**200 km** of new tracks, **68** new transit stations); an excellent broadband communication network.

### A massive consumer marketplace

Access to **510 million** European consumers

**12.1 million** inhabitants, **50 million** tourists, **8.4 million** visitors in the Region's main conference and exhibition centers.

### An unforgettable life experience

There's a reason why the Paris Region is the **#1** destination on the planet: with **50 million** visitors each year, the area is synonymous with "art de vivre", culture, gastronomy and history.

The Region is also committed to improving the environment, preserving biodiversity and reducing carbon emissions.

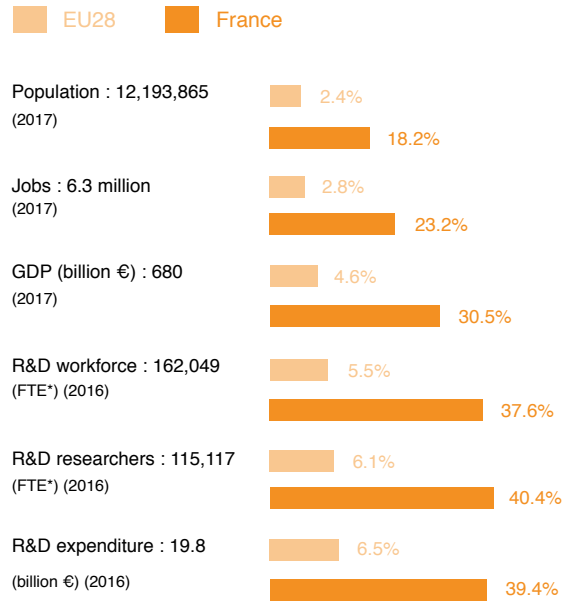
# One of the world's leading economic and innovative regions

## Paris Region in the European Union as of 01.03.2019



\* leaving the EU28 from March 2019

## Paris Region vs. France & Europe



\* Full Time Equivalent - Sources : Insee, Eurostat, Ministry of Education, Higher Education and Research

## An international region

**1.6 million** foreigners  
**13.7%** of the population  
(2015)

**111,678** foreign students in higher education, including **75,137** in Paris Region's public universities  
(2016-17)

**8,970** foreign PhD students  
(2017)

**5,265** foreigners researchers in Paris Region  
(2017)

**20.5 million** foreigners visitors  
(2017)

**15,100** foreign sites and...  
**620,000** jobs,  
**1 out of 6 jobs** in Paris Region is in a foreign company (**16.7%**)  
(2017, data 2013)

**414** foreign companies created  
**6,626** jobs  
(2017)



# Paris Region economic data



**707,000**  
students



**12,012 km<sup>2</sup>**  
Surface area



**12.1 million**  
inhabitants

**1,010**  
inhabitants  
per km<sup>2</sup>



**6.3 million**  
jobs (salaried and  
non-salaried)



**105 million**  
passengers in  
Air Traffic



**162,000**  
R&D jobs incl.

**115,000**  
researchers

**€19.8b**  
R&D  
expenditure



**€680b**  
GDP

**€55,227**  
GDP per capita



**1,093,000**  
companies

**1,211,000**  
sites (all activities)

**212,000**  
companies  
created

**11,500**  
company failures



**19 million**  
passengers

**7**  
high-speed  
train stations



Eiffel Tower



Château de Versailles



La Défense



Stade de France



Disneyland Paris



Prefecture



Greater Paris Metropolis



County border



International airport



High-speed rail network



High-speed train station (TGV)



Built-up area



Wooded area



Other area



The Seine and its tributaries



**54.2 million m<sup>2</sup>**  
Office space



**€143.9b**  
Import



**€89.8b**  
Export

Sources : French customs, Insee (National Institute of Statistics and Economic Studies), French Ministry of Education, Higher Education and Research, ORIE (Regional Observatory of Commercial Real Estate in Paris Region), Paris Aéroport, SNCF (National Railways of France)

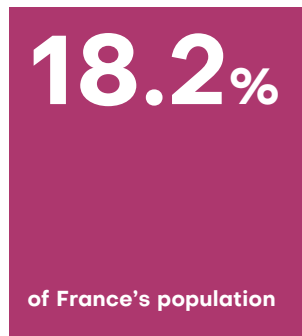
0 20 km  
© IAU IdF 2019  
Sources: IAU IdF IAU

# A young, cosmopolitan and talented population



© École polytechnique - J.Barande

## Europe's most populous region



**2.4%** of the European Union's population

Europe's most populous region ahead of Lombardy, Greater London, Andalusia, Catalonia and Auvergne-Rhône-Alpes

More than **100,000** inhabitants in 5 towns in Paris Region: Paris, Boulogne-Billancourt, Saint-Denis, Argenteuil and Montreuil

(INSEE, Eurostat 1/19, data 2016)

Paris Region, Europe's most populous region (2017)	
Paris Region (FR)	12,193,865
Lombardy (IT)	10,019,166
Greater London (UK)	8,868,066
Andalusia (ES)	8,408,976
Auvergne / Rhône-Alpes (FR)	7,986,827
Catalonia (ES)	7,441,284
Comunidad de Madrid (ES)	6,476,838
Lazio (Roma) (IT)	5,898,124
Campania (Napoli) (IT)	5,839,084
Mazowieckie* (PL)	5,341,484

Source: Eurostat 2018 (data 2017), \*NUTS 2013



## A young, dynamic population

**175,799** births

**75,561** deaths

Women's life expectancy

**85.8 years**

(France: 85.3)

Men's life expectancy

**80.9 years**

(France: 79.3)

(INSEE 1/19, data 2016 and 2017, Eurostat 1/19, data 2016, panel of regions)

**14.6‰** birth rate

(France: 11.7‰)

Paris fertility rate:

**1.98 children per woman**

Berlin: 1.55

Brussels: 1.82

Catalonia: 1.41

London: 1.71

Lombardy: 1.42

Upper Bavaria: 1.55

### 55% of Paris Region's population is under 40

Age	Paris Region		France	
	Total	%Total / Paris Region	Total	%Total / France
0-19	3,109,770	25.74%	16,182,763	24.45%
20-39	3,439,611	28.47%	15,957,082	24.11%
40-59	3,193,180	26.43%	17,654,548	26.67%
60-74	1,522,713	12.60%	10,283,702	15.54%
Over 75	816,871	6.76%	6,112,185	9.23%
<b>Total</b>	<b>12,082,145</b>	<b>100%</b>	<b>66,190,280</b>	<b>100%</b>

Source: Insee, 6/18, data 2015

## A cosmopolitan population

Paris Region is a place where people from all over the world live, study, work or visit.

**46.6%** come from Africa (**770,964**)

**31.6%** come from Europe (**522,646**)

**16.8%** come from Asia (**278,622**)

**4.9%** come from the Americas (**80,668**)

**0.1%** come from Oceania (**1,960**)

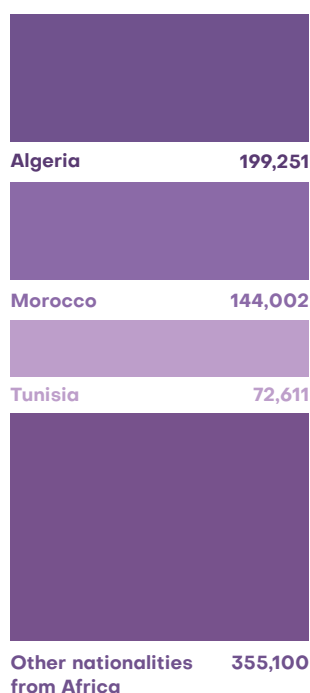
**1.6M**

foreign people  
(1,654,861)

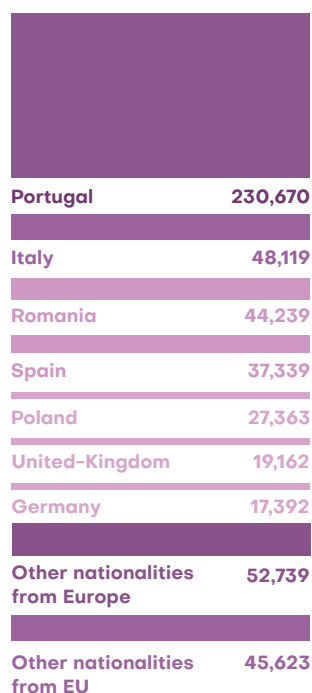
**13.7%**

of the Region's  
population is foreign

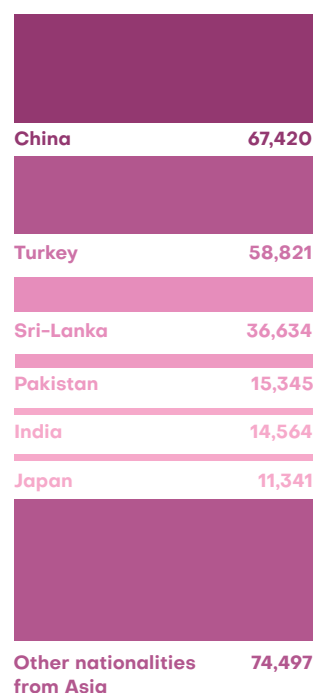
### Africa 770,964



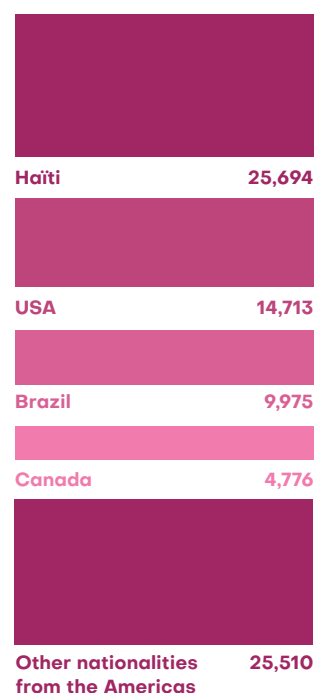
### Europe 522,646



### Asia 278,622



### The Americas 80,668



Source: INSEE, 6/18, data 2015

# Europe's leading economic region



AdobeStock

## A dynamic and forward-looking region

The highest GDP in Europe, equivalent to that of the Netherlands, and higher than that of Sweden, Poland, Belgium or Norway.

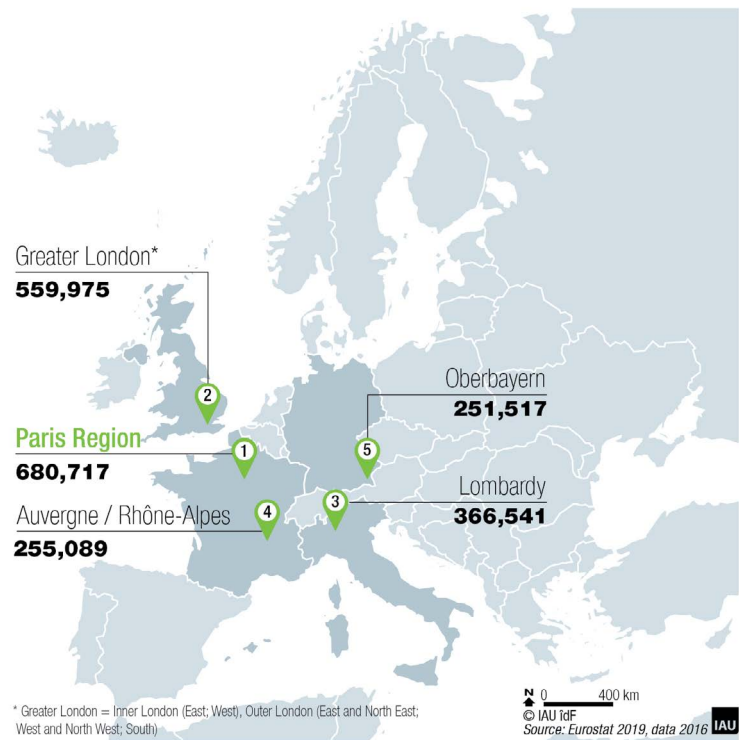
Access to over 510 million European consumers

Europe's highest concentration of Fortune 500 corporations

The Paris Region's economic dynamism benefits from its position at the heart of the world's economy.

The Paris Region is home to a truly diversified economy with industry leaders, innovative start-ups and all key stakeholders in between.

## Top 5 European Region for GDP (million euros in 2016)



GDP

**€680.7 billion**

**30.5%**

of France's GDP

GDP per job **€107,760**

GDP per capita **€55,227**

(INSEE, Eurostat, 2018, data 2015)

4.6% of EU28 GDP



## A major business hub in Europe

# 1,092,889

companies

(INSEE, 2016, Commercial activities, excluding agriculture)

**1,211,273** sites

(INSEE, 31.12.16)

> **8,000** startups

The primary strength of Paris Region's economy is the concentration of jobs, corporate headquarters, SMEs/SMIs and business start-ups.

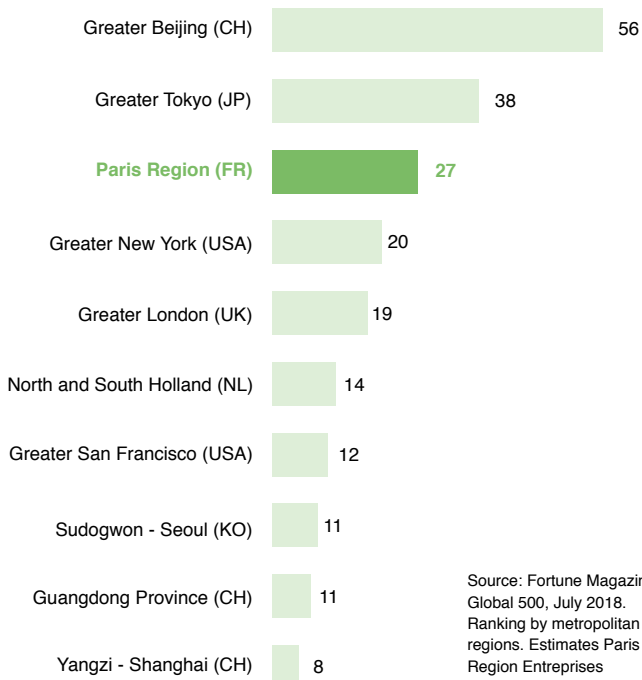
**212,049** companies created

(INSEE, 2018)

All of France's very large businesses (> 1,500 employees each) have a site in the region.

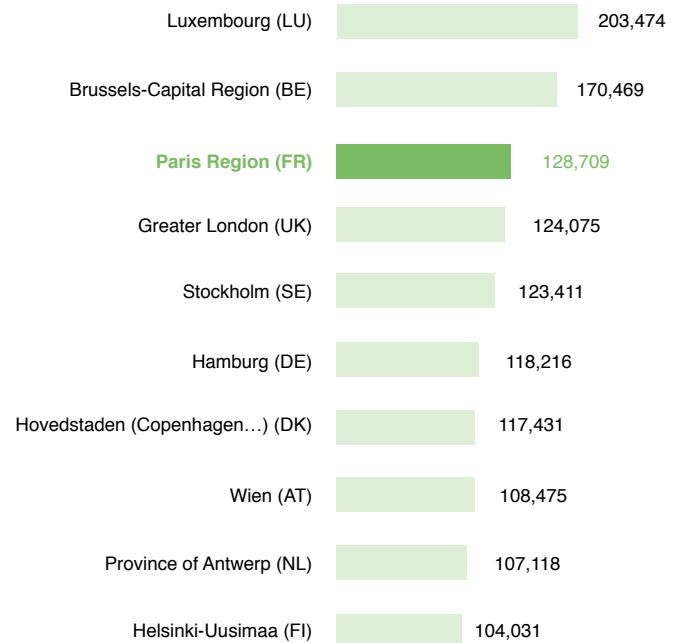
Paris Region is also the top French region in terms of hosting foreign companies and it accounts for a third of all new business creations in France.

## Paris Region, Europe's highest concentration of Fortune 500 Global corporate headquarters



Source: Fortune Magazine, Global 500, July 2018. Ranking by metropolitan regions. Estimates Paris Region Entreprises

## Europe's 3<sup>rd</sup> leading region for labor productivity



Apparent Labor Productivity - Source: Eurostat GDP in million euros 2016 (NUTS 2) divided by total number employed 15 years old and over (2016), estimates. Greater London= Inner + Outer London

## Top 10 Corporate Headquarters in Paris Region - Fortune Global 500

	Revenues in million euros	Total workforce
Total	124,542	98,277
AXA	106,081	95,728
BNP Paribas	98,377	196,128
Carrefour	76,291	378,923
Crédit Agricole	47,261	73,707
Electricité de France	65,604	154,808
ENGIE	61,268	150,000
Groupe BPCE	53,211	106,500
PSA Peugeot Citroën	61,438	175,341
Société Générale	56,821	46,804

Source: Fortune Magazine, Global 500, July 2018

## An attractive region for foreign companies

Europe's #2 Region for major foreign companies

**15,100**  
sites depending on a foreign company

**620,000**  
jobs, 1 out of 6 jobs in Paris Region (16.7%)

90 countries

### Main countries

USA (165,000 jobs),

Germany and UK (80,000 jobs each)

Sources: Insee, Esane, Clap and Lifi 2013, (11/17)

### Main sectors

Wholesale (132,000 jobs)

Industry (82,000 jobs)

Scientific and technical activities (75,000 jobs)

Information and communication activities (71,000 jobs)

### 2017 FDI arrivals

414 foreign companies from 43 countries  
Creating 6,626 jobs, including :

199 from European groups (48%) (2,502 jobs)

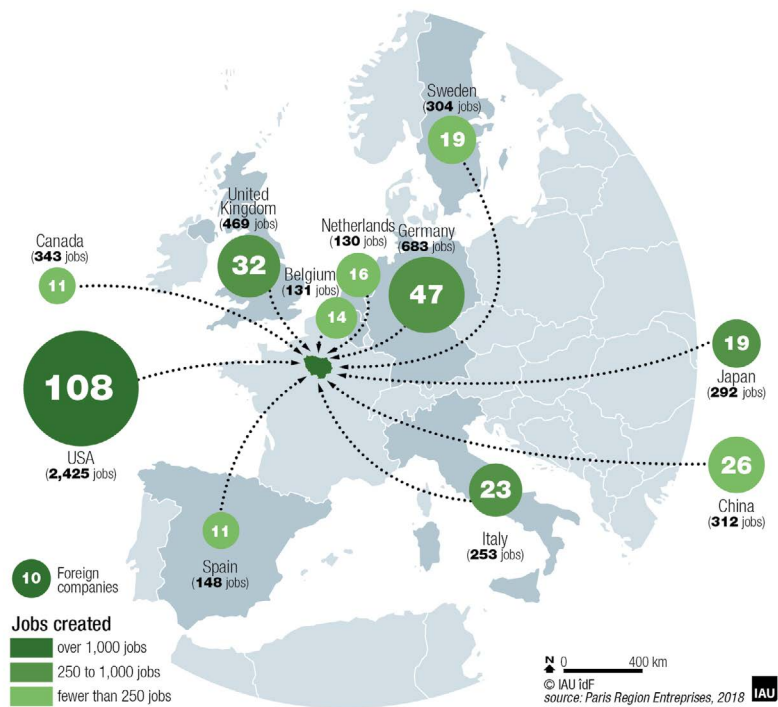
71 from Asian and Oceanian groups (17.2%) (1,088 jobs)

127 from American groups (30.7%) (2,847 jobs)

17 from other countries (Africa, Middle East) (4.1%) (189 jobs)

(Paris Region Entreprises)

Foreign direct investments in Paris Region: Main countries by business origin and jobs created in 2017



### Top Major Paris Region companies dependent on foreign groups (based on salaried workforce)

Country	Company	Salaried workforce
Netherlands	Ranstad	93,760
USA	Euro Disney Associes	14,649
Sweden	Securitas France SARL	13,806
United Kingdom	Compass Group France	13,505
Netherlands	Meubles Ikea France	9,758
Germany	Metro France	8,892
Netherlands	Conforama France	8,663
United Kingdom	Brico Depot	7,663
Luxembourg	Arcelormittal Atlantique et Lorraine	7,317
Sweden	H&M Hennes & Mauritz	6,886
USA	Cie IBM France	6,581
USA	Otis	6,049

Source: Diane 1/19

## Paris Region at the heart of world trade (2017)

**Paris Region's main trading partners are:**

**Europe** (exports: **57.9%**, imports: **59.1%**)

**Asia** (exports: **14.8%**, imports: **24.8%**)

**The Americas** (exports: **15.6%**, imports: **11.0%**)

The top 3 most exported products are indicative of the specialization of Paris Region industries (aerospace and defense, automotive, pharmaceutical industry).

**Imports: €143.9 billion**  
26.5% of France's imports

**Exports: €89.8 billion**  
19.4% of France's exports

### Main regional imports

Automotive manufacturing products :  
**€18.9b, 13.2%**

Telephones and communication equipment :  
**€9.1b, 6.3%**

Pharmaceutical products : **€8.8b, 6.1%**

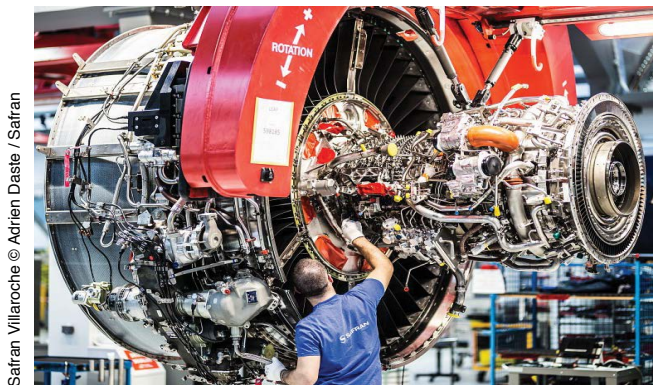
### Main regional exports

Space and aeronautics manufacturing :  
products : **€10.6b, 11.9%**

Automotive manufacturing products :  
**€10.3b, 11.5%**

Pharmaceutical products : **€6.6b, 7.4%**

(French Customs, 2017)



Safran Villaroche © Adrien Daste / Safran



© arstudio\_pro / Fotolia

## Paris Region's leading business partners (2017)

Top 10 suppliers			Top 10 customers		
Imports			Exports		
Country	Value (€ billion)	%	Country	Value (€ billion)	%
China	20.0	13.9%	United States	10.4	11.6%
Germany	16.6	11.6%	Germany	10.2	11.4%
United States	13.0	9.0%	Spain	6.1	6.8%
Belgium	12.3	8.6%	United Kingdom	5.9	6.6%
Italy	9.6	6.7%	Italy	5.6	6.3%
Spain	9.1	6.3%	Belgium	5.4	6.0%
United Kingdom	6.4	4.5%	Switzerland	4.7	5.3%
Netherlands	6.4	4.5%	China	3.2	3.6%
Switzerland	5.4	3.8%	Hong-Kong	2.2	2.5%
Japan	3.7	2.6%	Netherlands	2.1	2.4%
<b>Global total Paris Region*</b>	<b>143.9</b>		<b>Global total Paris Region*</b>	<b>89.8</b>	

Source: French Customs, 2017, \* including other countries



# A highly diversified economic landscape

Paris Region is home to a truly diversified economy with industry leaders, innovative start-ups and all key stakeholders in between.

It is renowned for its highly diversified economic landscape and sectors of excellence, including artificial intelligence, biotechnology, nanotechnology, telecommunications, 3D animation, as well as the aerospace and automotive industries...

## Key sectors in Paris Region



### Aerospace & Defense

Airbus Group, Dassault Aviation, Safran, Thales Group, Arianespace, European Space Agency, Zodiac...



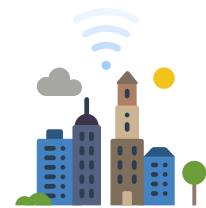
### Automotive, Logistics and Transportation

Renault, PSA Peugeot Citroën, Bosch, Continental, Faurecia, Valeo, Air France-KLM Group, DHL, FedEx, Geodis, Paris Aéroport, RATP, SNCF, Sysra, Transilien, Transdev...



### Business Services

Accenture, Cap Gemini, Ernst and Young, Gide Loyrette Nouel, KPMG...



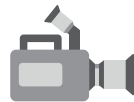
### Cleantech, Energy / Smart City

Air Liquide, Areva, EDF, ENGIE, Schneider Electric, Suez, Total, Veolia... Bouygues, Eiffage, Vinci...



### Commerce / Retail

Amazon, Carrefour, Cora, FNAC, Galeries Lafayette, Groupe Casino, H&M, Ikea, Marionnaud, Metro, Printemps, Uniqlo, Zara...



### Creative industries / Film, TV

Europacorp, Gaumont, MK2, Netflix, Paramount, Pathé, Universal, Warner Bros, UGC... Buf compagnie, Gameloft, Mac Guff, Mikros Image, Mimesis Republic, Neko-Entertainment, Ubisoft...



### Fashion, Design, Luxury Goods

Cartier, Chanel, Hermes, Christian Louboutin, Kering (Gucci, Yves Saint-Laurent), LVMH (Louis Vuitton, Christian Dior, Guerlain...), L'Oréal...



### Financial Services / Insurance

BNP Paribas, BPCE Group, CM-CIC Group, Crédit Agricole, La Banque Postale, Société Générale, Axa, Allianz, CNP Assurance, Generali...



### Food Industry

Danone, Finatis, Kraft Foods, Lactalis, Nestlé, Pernod Ricard...



### Healthcare & Life Sciences

AstraZeneca, Bristol-Myers Squibb, GlaxoSmithKline, Guerbet, Lilly, Pfizer, Roche, Sanofi-Aventis, Novartis...



### IT

Apple, Atos, Dassault Systèmes, Facebook, Free, Fujitsu, Google, Horiba, Huawei, IBM, Microsoft, Motorola, Nokia France, Oracle, Orange, Philips, Safran Electronics and Defense, SAP, SFR Group, Siemens, Sony, Thales, Vivendi, ZTE...



### M.I.C.E.\*

Comexposium, Reed Midem, Viparis... Disneyland® Paris...

\*Meetings, Incentives, Conventions, Exhibitions

Source: Paris Region Entreprises, 2019



### Tourism, Hotels, Catering

Accor, Club Med, Elior Groupe, Louvre Hotels, Lucien Barrière Group, Marriott, Pierre et Vacances & Center Parcs Group, Sodexo ...

## Paris Region on the podium of global cities

fDi European  
Regions of the  
Future 2018/19

**Paris  
Region  
#1**

European region  
of the future

#2 Dublin Region  
#3 North  
Rhine-Westphalia

(fDi Intelligence 2/18)

**Global Cities Index  
2018** on economic  
performances

#1 New York  
#2 London  
#3 **Paris**

(A.T. Kearney)

**Global Cities  
Outlook 2018** on the  
potential of a city to  
attract and retain global  
capital, people, and  
ideas in coming years

#1 San Francisco  
#2 New York  
#3 London  
#4 **Paris**

(A.T. Kearney)

**Cities of Influence,  
Where to find the  
best talent**

#1 London  
#2 **Paris**  
#3 Madrid

(Colliers International, 2018)

**Global Cities  
Investment  
monitor 2018**

International investors'  
perceptions of future  
attractiveness.

#1 New York  
#2 London  
#3 **Paris**

Paris, **4th** most  
attractive location to  
set up a business

(KPMG – Paris Ile-de-France  
Capitale Economique)

**Cost of living  
Survey 2018**

**Paris** less expensive  
in Europe than  
Zurich, Bern, Geneva,  
Copenhagen, Moscow,  
London, Dublin, Milan

(Mercer 2018)

## Very competitive set up costs among global cities

### Overall results – Average of services and manufacturing sectors\*

	Paris	Tokyo	London	New York
Initial Investment	13,679	20,910	15,689	15,271
Rank, total investment	1	4	3	2
Total labor	7,595	7,267	8,029	11,002
Rank, total labor	2	1	3	4
Total transportation	810	465	1,010	854
Rank, transportation	2	1	4	3
Total utilities	280	376	367	321
Rank, electricity	1	4	3	2
Total operating costs	9,326	8,941	10,520	12,616
Rank, operating costs	2	1	3	4
<b>Total costs</b>	<b>21,849</b>	<b>22,302</b>	<b>22,741</b>	<b>24,956</b>
<b>Overall rank</b>	<b>1</b>	<b>2</b>	<b>3</b>	<b>4</b>

\*10-Year Average Annual Total Location Sensitive  
Costs (in thousand US\$)

Source: Competitive Alternatives,  
KPMG 2016, Panel of regions and criteria

## Very competitive living costs

### Paris more affordable than London

#### Housing in Paris is 12% more affordable than in London (in €)

	Paris	London
Monthly rent for 85 m <sup>2</sup> (900 Sqft) furnished accommodation in expensive area	2,504	2,866
Monthly rent for a 45 m <sup>2</sup> (480 Sqft) furnished studio in normal area	1,185	1,459
Utilities 1 month (heating, electricity, gas ...) for 1 person in 45 m <sup>2</sup> (480 Sqft) studio	114	140
Internet 8 Mbps (1 month)	21	24

#### Transportation in Paris is 39% more affordable than in London (in €)

	Paris	London
Monthly ticket public transport	75	161
Taxi trip on a business day, basic tariff, 8 km. (5 miles)	16	15

#### Personal care in Paris is 20% more affordable than in London (in €)

	Paris	London
General practitioner's appointment / Short visit to private Doctor (15 minutes)	25	86

#### Entertainment in Paris is 13% more affordable than in London (in €)

	Paris	London
2 tickets to the movies	22	30
1 month of gym membership in business district	71	74

Source: www.expstatian.com

# Europe's largest talent pool

Station F Create Zone © Patrick Tourneboeuf



## A smart and talented workforce

**6.3M**  
jobs

(Insee, 2017)

**87.9%** jobs in services

**7.1%** in industry

**4.8%** in construction

**0.2%** in agriculture

(Insee, 1/19, data 2015)

**36%** of all French executives  
(Insee, 2017)

Executives' average annual net salary: **€56,450**

Average annual net salary: **€34,340**

(Insee 1/19, data 2015)

**8.0%** Unemployment rate

(Insee, T3 2018)

**23.2%**  
of all jobs in France

(Insee, 2017)

## The Paris Region's active population by professional category

Managerial and highly-skilled occupations	1,670,042	27.3%
Service workers, sales & administrative support	1,623,811	26.6%
Skilled and mid-level employees	1,558,271	25.6%
Laborers and automobile drivers	852,600	14.0%
Skilled tradesmen and business directors	290,463	4.8%
Farm, fishing and forest operators	5,386	0.1%
Others	97,656	1.6%
<b>Total Active population 15-64 years old</b>	<b>6,098,229</b>	<b>100%</b>

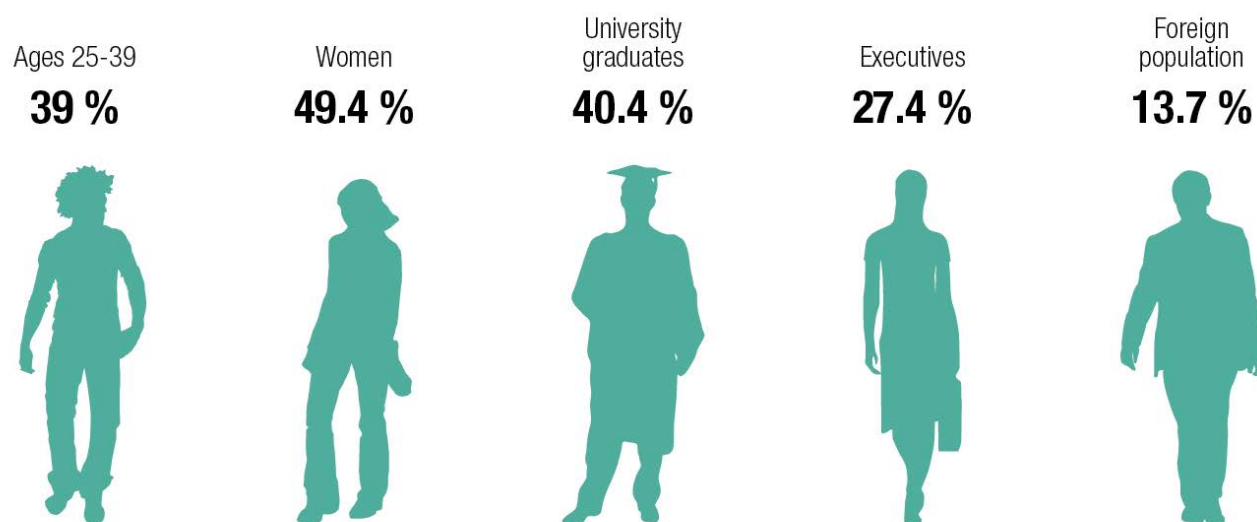
Source: Insee 12/18, data 2015 - Total population 15-64 years

Start-up Ubique / Ali AZADI © École polytechnique - J.Barande





## Characteristics of the working population in Paris Region



© IAU îdF 2019  
 source: Insee, data 2015 **IAU**

## Sector breakdown of business sites and jobs in Paris Region in 2016

Business sector	Sites	Jobs
Scientific and technical activities; administrative and support services	297,277	921,497
Trade of automotive vehicles and motorcycles	214,742	703,961
Public administration, education, human health and social work	127,135	218,135
Construction	124,795	275,261
Information and communication	84,992	391,249
Other service activities	75,288	113,786
Accommodation and food	64,002	270,923
Transportation and storage	58,583	357,453
Real estate activities	54,183	74,864
Financial and insurance activities	52,575	343,810
Manufacture of other industrial products	31,302	156,183
Manufacturing of food products, beverages and tobacco products	8,274	50,560
Production and distribution of water; sewerage, waste management and remediation activities	7,095	76,661
Manufacturing of electrical, electronic and computer products, machinery and equipment	2,908	67,587
Manufacturing of transport equipment	547	72,403
Coking and refining	33	1,716
<b>Total Active population 15-64 years old</b>	<b>1,203,731</b>	<b>4,096,049</b>

© Insee, répertoire des entreprises et des établissements - Commercial activities excluding agriculture

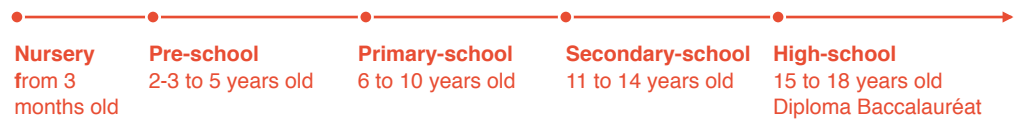
# The highest concentration of students and PhD candidates

## The French education system

The education system is operated by the French Public Education Authority. Schooling is free, and compulsory from 6 to 16 years old. Public pre-school is available for children from 2 years old on.

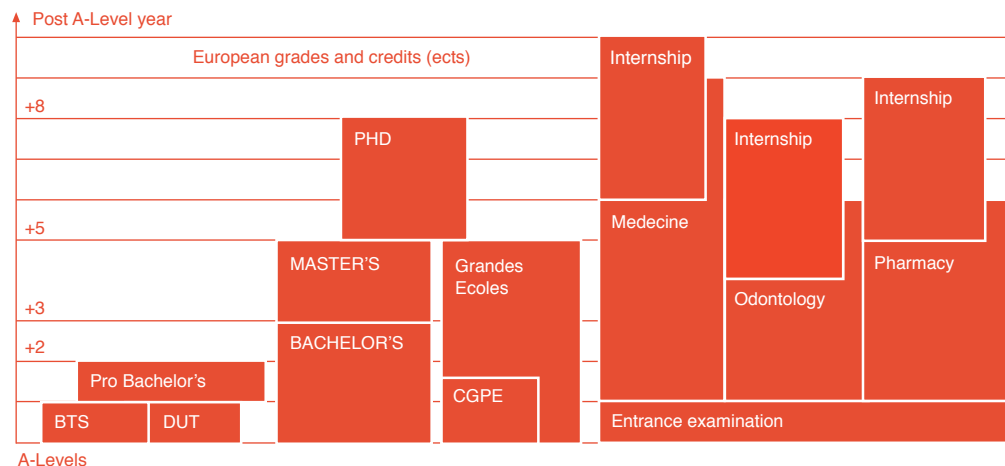
### Primary and secondary education

**1,327,518** pupils and **1,066,496** students in primary and secondary education (public and private)



## Higher education

Source: MESR (French Ministry of Higher Education and Research)  
 BTS: Technical programs  
 DUT: University Diploma of Technology  
 Grandes Ecoles: Engineering & Business schools  
 CPGE: class which prepares students to enter the Grandes Ecoles



## Highly educated students in Paris Region

**384,593** students in Paris Region's public universities

**26,200** PhD Students  
**38%** of French PhD Students

**16** Public universities

**70** "Grandes Ecoles" (elite schools) and engineering schools

**40.4%** of the adult population holds at least a bachelor's degree

**706,842**  
students

**26.4%**  
of France's student population

## Main branches of higher education in 2017-18

Bachelor's, Master's degree and PhD: **296,583**

Business schools, management and accounting: **42,762**

Engineering schools: **42,347**

Preparatory classes for the Grandes Ecoles: **30,833**

Advanced technician programs: **44,038**

University Diploma of Technology: **17,093**

Paramedical and human services schools: **28,841**

Others (art, architecture, private universities, etc.): **94,342**

Other university diplomas, including health: **110,003**

(Ministry of Education, Higher Education and Research, RERS 2018, data 2017-18)

## A Region attracting foreign talent

Paris: 2nd best European student city (QS Best Student Cities, 2018)

# 111,678

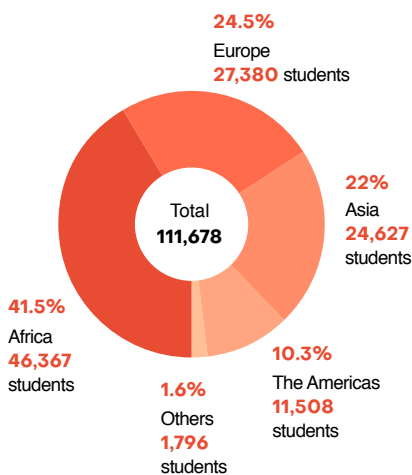
foreign students in Paris Region

35% all foreign students in French higher education.

Of these, 75,137 in Paris Region's universities, which is 20% of the region's public university students.

8,968 foreign PhD students, i.e. 36% of PhD students in Paris Region

## Foreign students in Paris Region higher education



Source: Ministry of Education, Higher Education and Research, 2016-17

## Numerous options for international education

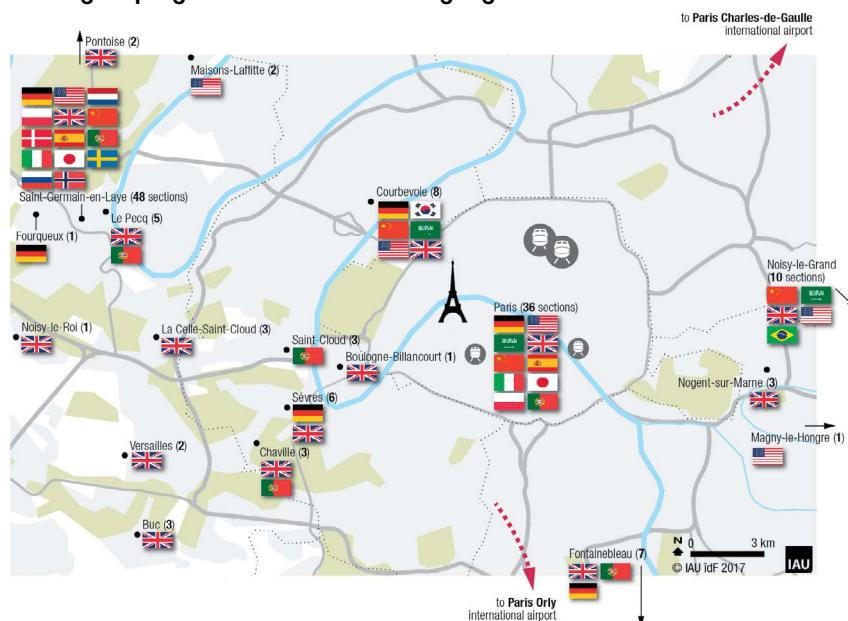
156 International Sections (bilingual programs) in 17 different languages, leading to the "International Option" of France's high school graduation exam (OIB), affiliated with the French public education authority.  
**Fees are modest (€0-5,000/year).**

From pre-school (3-6 years old) to high school (15-18 years old), Paris Region has an extensive selection of bilingual programs and international schools open to foreign and French pupils.

More than 40 international and private schools.

A European school scheduled to open in September 2019 in Paris-La Défense.

## 156 bilingual programs in 17 different languages



British	40	Portuguese	15	Japanese	6	Norwegian	3
American	16	Arab	9	Polish	5	Swedish	3
Chinese	16	Italian	7	Danish	3	Russian	3
German	16	Spanish	7	Dutch	3	Brazilian	2
						Korean	2

Source: Educsof 2018

## Breakdown of the students in Paris Region's public universities in 2016-2017, by field of study

Fields of study	Total Students	%
Law, Political Science	56,785	14.90
Economics, Administration	46,024	12.08
Letters, Art, Languages, Humanities and Social Sciences	128,573	33.74
Sciences*	73,416	19.26
Sports	7,359	1.93
<b>Subtotal General Fields</b>	<b>312,157</b>	<b>81.91</b>
<b>Health sector</b>	<b>51,825</b>	<b>13.60</b>
<b>University Institute of Technology Fields</b>	<b>17,098</b>	<b>4.48</b>
<b>Grand Total</b>	<b>381,080</b>	<b>100</b>

\* (Basic and Applied sciences / Natural and Life sciences / Interdisciplinary sciences)  
 Source: Ministry of Education, Higher Education and Research, data 2016-17



## World-class research universities, business, engineering and specialized schools

The excellence in higher education and research in France is widely acknowledged around the world.

Numerous Paris Region universities and higher education institutions place highly in the most reputable international rankings, such as the Financial Times ranking, the Times Higher Education, the Shanghai ranking (ARWU)...

### Specialized schools

GOBELINS, the school of the image, ranked 2<sup>nd</sup> best school of animation in the world

(2018 International Animation School Rankings)



Institut Français de la Mode, best management training in the world and second best Master of Fashion in the world, behind Central Saint Martins of London

(Business of Fashion, 2017)

## MBA's and Business Schools

(Financial Times Rankings (2018))

### Global MBA program

INSEAD (#2)  
HEC Paris (#21)

### 3 of the Top 5 Masters in Management

HEC Paris (#2)  
Essec Business School (#4)  
ESCP Europe (#5)

### 5 of the Top 15 Executive MBA programs

HEC/LSE/NYU:Stern (#2)  
Tsinghua University/  
INSEAD (#3)  
HEC Paris (#6)  
ESCP Europe (#10)  
INSEAD (#13)

### 3 of the Top 10 European Business Schools

HEC Paris (#2)  
INSEAD (#3)  
Essec (#8)



## Universities

### 3 Paris Region universities in the ARWU Top 100

Sorbonne University (#36),  
Paris-Sud University (#42),  
Ecole Normale Supérieure (#64)

Academic Ranking of World Universities 2018

### 2 of the world's 10 best higher education institutions in Mathematics

Paris-Sud University (#2),  
Sorbonne University (#9)

ARWU Global Ranking of Academic Subjects 2018 – Mathematics

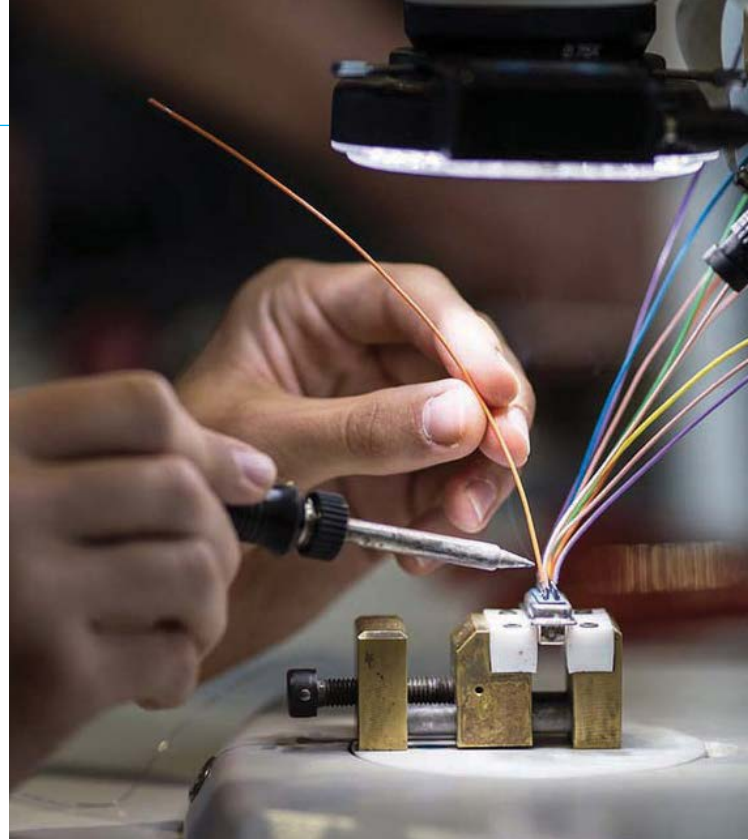
### 4 higher education institutions in the Top 200

Paris Sciences et Lettres – PSL Research University Paris (#41),  
Sorbonne University (#73),  
École Polytechnique (#108),  
Paris Diderot University – Paris 7 (#194)

Times Higher Education World University Ranking 2019

# Paris Region, an innovation powerhouse

© SIAE 2017 / Anthony Guerra / Alex Marc

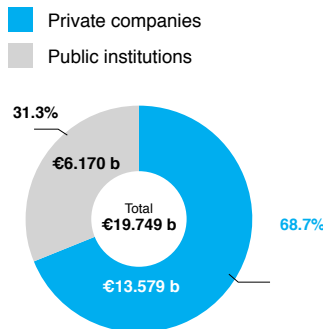


## #1 in Europe for R&D (2016)

The highest amount of R&D expenditure in Europe

Paris Region R&D expenditure  
**€19.749b**

6.6% of EU and 39.8% of French R&D expenditure  
R&D is 2.98% of Paris Region's GDP

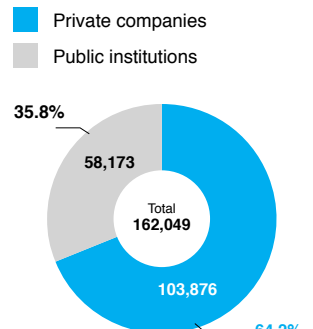


Source: Ministry of Education, Higher Education and Research, data 2016

The largest R&D talent pool in Europe

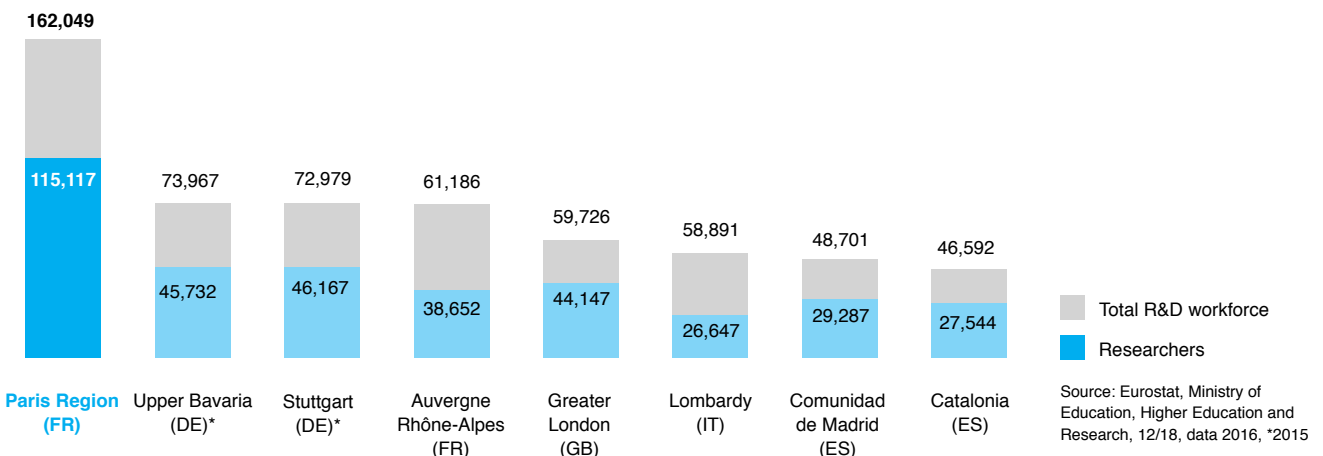
Paris Region R&D workforce:  
**162,049** including  
**115,117** researchers

These professors, researchers, engineers, technicians and support staff work in universities, Grandes Ecoles, public institutes and companies. 5.6% of EU and 37.5% of French R&D employees. 40.5% of the researchers in France



Source: Ministry of Education, Higher Education and Research, data 2016

## Paris Region, the best place in Europe to source R&D talent



Source: Eurostat, Ministry of Education, Higher Education and Research, 12/18, data 2016, \*2015

## Internationally recognized technological and scientific skills in Paris Region

**32** Nobel Prizes

Ecole Normale Supérieure, top Nobel producing undergraduate institution in the world in 2016

**11 Fields Medals**  
**4 Abel Prizes**

the two most prestigious awards in mathematics

The highest number of people employed in the fields of science and technology and scientific and engineers in Europe

(Eurostat data 2017)

**25,160** students enrolled in doctoral programs, i.e. **37%** in France

(Eurostat, data 2016)

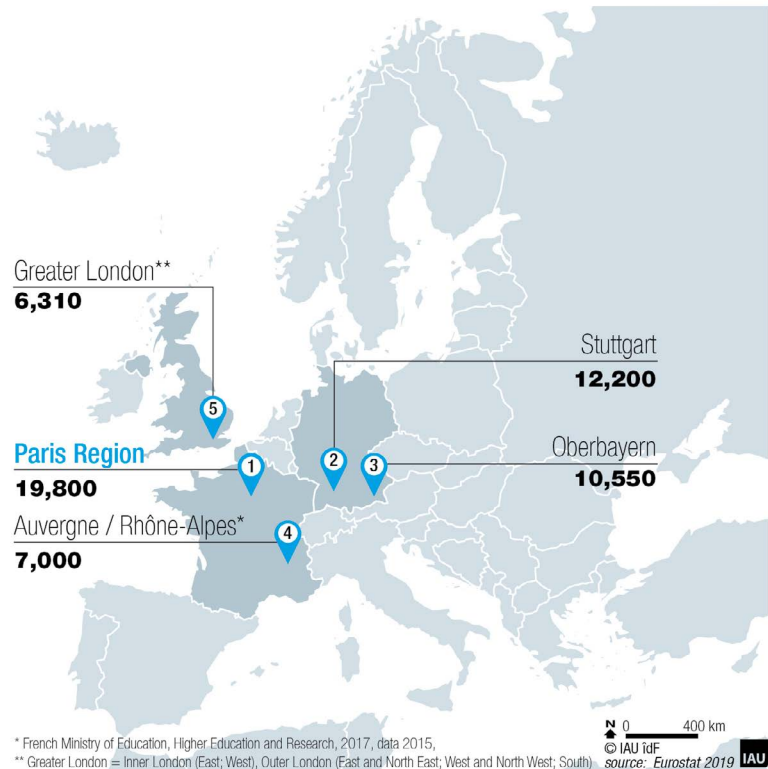
**5,265** foreign researchers in Paris Region  
(FNAK, data 2017)

**42.1%** of foreign researchers in France  
(FNAK, data 2017)

Paris, European leader and **#9** in the world of the Global Innovation Index 2018 of clusters  
(OMPI 2018)

## The #1 European region for research & development expenditure

Europe's top 5 regions by R&D expenditure (millions of euros in 2015)



**7,682** patents filed, i.e. almost half of the patents filed in France  
(INPI, data 2016)

Paris Region is the European leader, and accounts for **5.1%** of all European patent applications in EU-28.

**#3** region in the world in volume of papers in international journals (**51,000**) behind Beijing and Tokyo  
(Elsevier/scopus, data 2014)

Nearly **500,000** scientific publications registered in Paris Region, mainly in the fields of medical research, physics and astronomy, engineering sciences, biochemistry, genetics, and molecular biology, according to the Scopus database, between 2004 and 2014.

(IAU île-de-France - Source OST)



## Paris Region boosts your innovation

Paris Region's diversified economy is buzzing with top-ranked high-tech clusters and research centers. This unique landscape generates exciting opportunities for cross-sector collaboration. For example, combining IT and healthcare, or automotive and eco-technology.

8 regional competitiveness clusters make up this dynamic ecosystem.

3,100 members including:  
2,000 companies  
255 labs and teaching institutions, ...

Over  
2,500  
projects

€8.6b  
of total  
funding



### Aeronautics, space and defence

345 members, incl.  
132 major groups,  
132 SMEs,  
49 labs and teaching institutions

73 projects funded since the cluster was founded  
Total funding:  
313 million €

cap-digital  
Paris Region

### Digital & ecological transition

1,070 members, incl.  
73 major groups,  
810 SME's,  
75 labs and teaching institutions

10 investments funds  
5 urban communities  
800 projects funded since the cluster was founded  
Total funding:  
1,650 million €



COSMETIC VALLEY  
PARIS REGION

### Perfumery and cosmetics

525 members, incl.  
65 major groups,  
460 SME's,  
130 labs and teaching institutions

350 projects funded since the cluster was founded  
Total funding:  
370 million €

Elastopôle  
Rubber and Polymer Competitiveness Cluster

### Rubber and polymer industry

138 members, incl.  
11 major groups,  
98 SME's,  
4 start-ups,  
25 labs and teaching institutions

89 projects funded since the cluster was founded  
Total funding:  
265 million €



### Financial services

500 members, incl.  
160 major groups,  
300 SME's,  
20 labs and teaching institutions

28 projects funded since the cluster was founded  
Total funding:  
80 million €

medicen  
PARIS REGION

### High-tech healthcare and new therapies

410 members, incl.  
25 major groups,  
346 SME's,  
34 labs and teaching institutions

335 projects funded since the cluster was founded  
Total funding:  
1,800 million €

mov'eo  
Imagine mobility

### Transport and mobility

374 members, incl.  
41 major groups,  
233 SME's,  
37 labs and teaching institutions,  
14 local authorities & institutional bodies

251 projects funded since the cluster was founded  
Total funding:  
1,112 million €

Systematic  
Paris Region Digital Ecosystem

### European innovation and technology cluster in digital and Deep Tech

900 members, incl.  
150 major groups,  
590 start-ups / SME's / mid-cap companies,  
140 labs and teaching institutions,  
20 investors

625 projects funded since the cluster was founded  
Total funding:  
Over 3 billion €

Sources: ASTech, Cap Digital, Cosmetic Valley, Elastopole, Finance Innovation, Medicen, Mov'eo, Systematic (data 2018)

# Europe's largest scope of real estate solutions



Offices in Pantin. Ourcq waterway. © Benh LIEU SONG

## Office Space

(ORIE and BNP Paribas Real Estate, 2017)

Surface area

**54.2 million m<sup>2</sup>**

(ORIE, 2017)

Take up **1.8 million m<sup>2</sup>**

(BNP Paribas Real Estate T3 2018)

Immediate supply

**4.02 million m<sup>2</sup>**

(BNP Paribas Real Estate T3 2018)

Vacancy rate **5.5%**

Supply under construction

**1.23 million m<sup>2</sup>**

(BNP Paribas Real Estate T3 2018)

## Housing

(Insee, data 2015)

**5.6 million** housing units

• **71.9%** flats (4 million)

• **26.5%** houses (1.5 million)

## Private housing rents in Paris Region

	Paris	Inner suburbs	Outer suburbs	Paris Region
Rent in €/m <sup>2</sup>	22.9	16.7	13.8	18
Average monthly rent in €	1,139	869	814	955

Source: OLAP, 2018, Average rent as at 1/1/18

## Paris Region is very competitive on real estate business costs

### Top 10 office space market by occupancy costs (2017) USD per workstation

Rank 2017	Country	City	Occupancy costs per workstation in \$ in 2017
1	China	Hong Kong	27,432
2	United Kingdom	London	22,665
3	Japan	Tokyo	18,111
4	USA	Fairfield County, Connecticut	17,414
5	USA	San Francisco	16,205
6	USA	New York	15,931
7	USA	Silicon Valley	15,004
8	Switzerland	Geneva	13,424
9	Australia	Sydney	11,997
10	France	Paris	11,756

Source: Office Space Across the World 2017, Cushman & Wakefield

## Office stock in major world capitals in m<sup>2</sup>

<b>Paris Region</b>	<b>54,194,406</b>
New York (Manhattan)	40,227,016
Dallas/Fort Worth	28,614,136
Chicago	26,477,366
Houston	22,426,794
Central London	20,943,129
Munich	20,818,500
Berlin	19,465,000
Los Angeles	18,673,511
Frankfurt	15,366,000

Q3 2018 for Europe, Q2 2018 for the USA  
Sources: ORIE for Paris Region, BNP Paribas Real Estate for other countries

## Everything you need to set up

Around **1,500** business activity areas  
**34** business districts  
Paris La Défense, **4th** largest business district in the world

Coworking areas, business centers, shared offices...  
The number of places where you can work as if you were at the office without going there has increased impressively in Paris Region in recent years.

**650** “third places,” providing flexibility to business people, comprising:

- 171** coworking spaces,
- 146** shared offices,
- 87** fablabs,
- 216** business creation or development support sites
- 1,000** new third places by 2021

## Paris Region, the world incubator capital

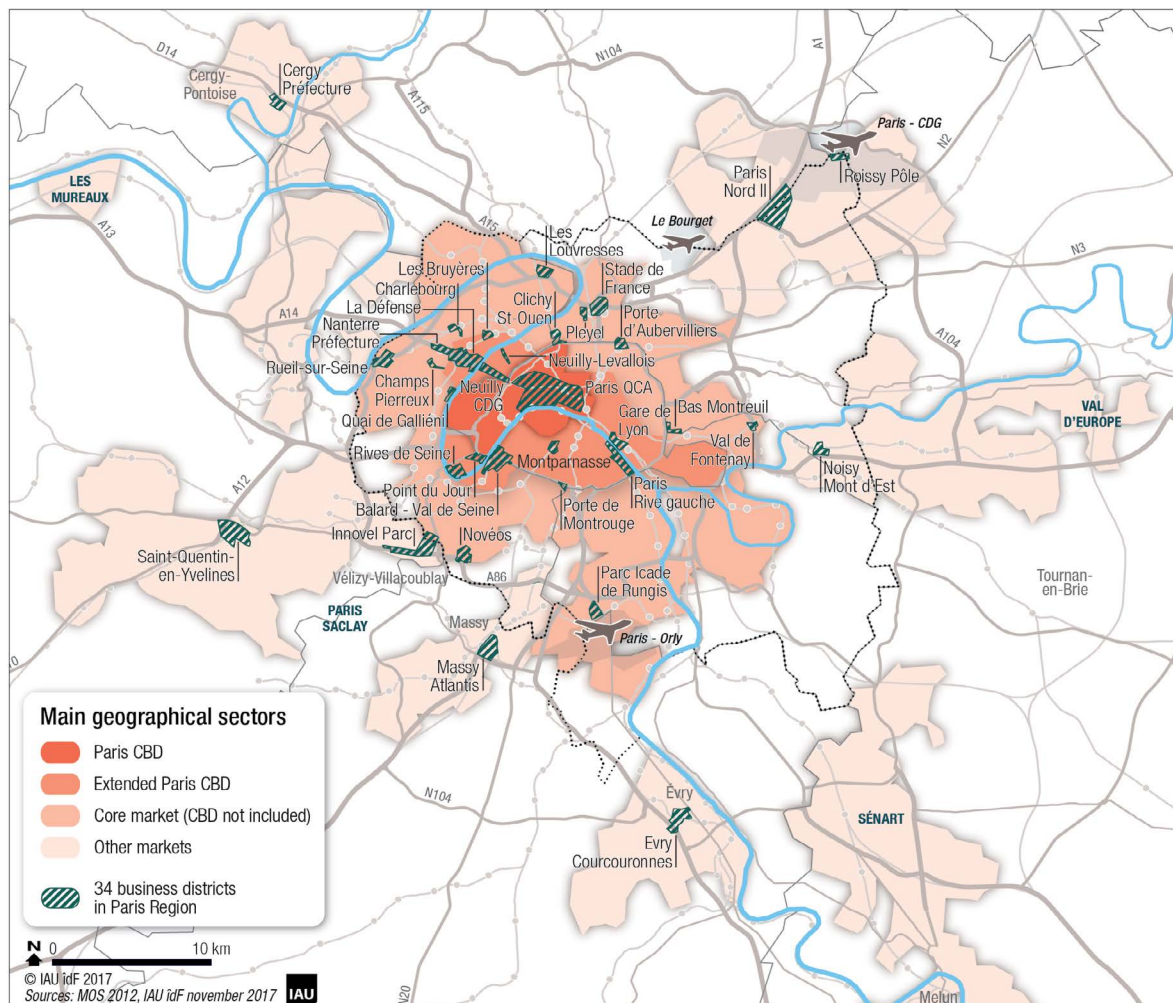
Over **130,000 m<sup>2</sup>** of space for start-up incubators have been created in recent years, including **34,000 m<sup>2</sup>** at Station F, the largest incubator in the world hosting **1,000** start-ups, with some **3,000** desks.  
By 2020, an additional **65,000 m<sup>2</sup>** will be made available.

Sources: IAU Île-de-France, 2018, data 2016 - Apur, Blue Office, Crocis, mairie de Paris, Makersy, MENESR, Multiburo, NCI, Neo nomade, Nextdoor, PRM, Région Île-de-France, Regus, Servcorp, Stop & Work, Technomap, IAU © IAU, Ernst and Young/ULI

## Reinventing Paris Region

To enhance its attractiveness and competitiveness in our globalized world, Paris Region is undertaking major infrastructure and urban planning projects, including the Grand Paris project, the largest urban project in Europe providing a new transport network, new residential projects, office districts, and R&D hubs open to international competitions to reinvent Paris Region.

## The Paris Region Office Market





# World-class transportation network and connections



Aerobeastock

## Reach 511 million consumers in under 2 hours by plane

Paris Region's high quality infrastructure ensures the seamless flow of people, goods, capital and data.

Get where you're going with 3 international airports, high-speed rail and an ever-expanding urban subway system thanks to the Grand Paris Express project.

### By plane

(Paris Aéroport, 2018, \*2017)

- 3 international airports
- 709,997 flights
- 165 airlines
- 119 countries served from Paris Region

**105.3 million**  
passengers

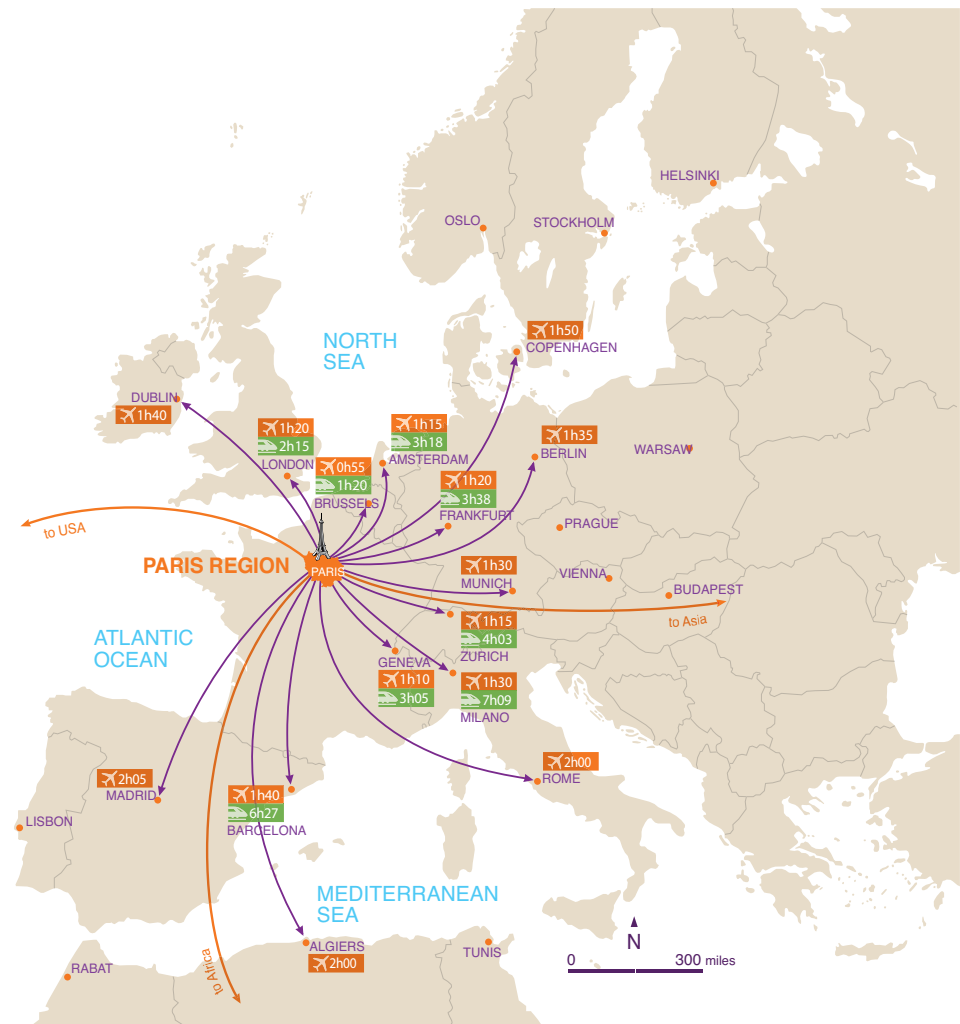
**Paris-Charles de Gaulle (CDG)**  
# 2 in Europe for passenger traffic  
72.2 million passengers  
480,945 flights

**Paris-Orly**  
33.1 million passengers  
229,052 flights

**Paris-Le Bourget\***  
Europe's leading business airport  
100,000 passengers  
54,177 flights

10 airfields and 1 heliport

## Paris Region, connected to Europe and the world



© Paris Region Entreprises

### By train

(SNCF, Arafer, 2017 and Ile-de-France Mobilités)

**10 main stations, including 7 TGV (high-speed train) stations**

1 million passengers on 3,550 trains per day on the Paris Region railway network  
5 railway stations have traffic that exceeds 100,000 travellers daily  
Gare du Nord, #1 European station  
19 million TGV passengers travelling from Paris to main European destinations  
4,700 km of railway tracks, of which 636 km of LGV (High Speed Line)



## An efficient transit and mobility system at the regional level

### Public transport

**41 million**

trips per day

1,280 km of metro, train and tramway network  
 6,200 regional trains every day  
 At rush hour, more than 650 trains simultaneously.  
 385 stations at key points throughout the network  
 270 green buses (electric or gas) in circulation (2018), more than 5,000 by 2025  
 47 night bus lines serving 200 towns and cities

### Shared transport for alternative mobility

A great offer with innovative and green alternative transport solutions.  
 Growth of new modes for getting around, such as carpooling, cycling...

### Self-service and free-floating bikes, cars and mopeds

(IAU Île-de-France, Velib Metropole)

**Velib Metropole**, the world's largest self-service bicycle system (in number of bikes) since 2007

- More than **10,000** bikes: 30% of electric power-assisted bicycles, 70% of traditional bicycles,
- **1,121** stations in **60** municipalities
- Around **35,000** trips per day

### Free-floating bike, scooter and moped operators :

- **E-Bikes: 4,000** Mobikes in Paris City and the close suburbs + 400 Donkey Republic
- **E-Mopeds: more than 4,000**, including Cityscoot (>2,000), Coup (Bosch) (1,700), Troopy (150)
- **E-Scooters: several hundreds**
- Lime: more than 2 million trips and 315,000 users, Bird: 110,000 users, Bolt, Wind, Voi, Tier, Knot, WeTrott...

### Freefloating cars:

- Moov'in (Renault-Adda): 270 cars
- Free2Move (PSA): 550 cars
- Car2go (Daimler): 400 cars

### Carsharing (car clubs):

Communauto, Clem', the subsidiaries of car rental companies (Zipcar launched by Avis, Ubeeqo by Europcar).

### Carsharing peer to peer:

Drivy, the start-up Koolicar, OuiCar, GoMore

### 4.7 billion trips by public transport in Paris Region

Mode of traffic	Lines	Millions of trips*
Underground / Subway	16	1,519
Train - RER™ (SNCF - RATP)	13	1,441
Tramway	10	287
Bus (including night buses)	1,511	1,421
<b>Total</b>	<b>1,550</b>	<b>4,668</b>

Source: Île de France Mobilités d'après Optile, RATP, SNCF (2017, \*2016) \*\* High-speed metro

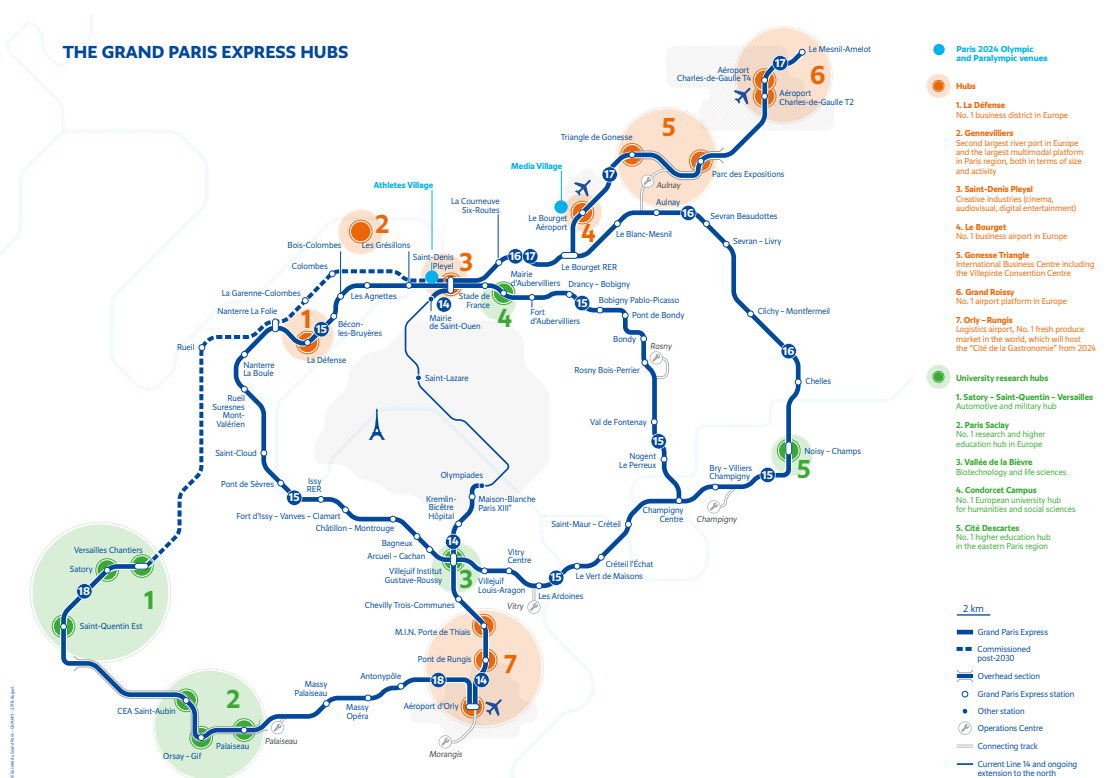
## The Grand Paris project

The largest urban development project in Europe providing a new transport network. Heavy investments in modernizing and expanding the public transport network

200 km of additional automated metro lines  
 68 new stations  
 2 million passengers everyday  
 €35b invested through 2030

The project is set to link Paris Region's three airports, as well as business districts and scientific clusters.

600,000 m<sup>2</sup> of construction projects associated with the Grand Paris Express project  
 200,000 m<sup>2</sup> of commercial space  
 Over 6,100 residential projects



Source: Société du Grand Paris, 2018

# Exceptional logistics infrastructure



Barge © Fotolia / Coco

## Significant capacity in logistics real estate in Paris Region

### Warehouses >5,000 m<sup>2</sup>

Surface area: **19 million m<sup>2</sup>** (ORIE 2018)  
 Take up: **1.1 million m<sup>2</sup>** (Immostat, 2018)  
 Available now: **1.1 million m<sup>2</sup>** (as of 1/1/19)

(ORIE, Immostat, BNP Paribas Real Estate)

## Road, waterway and railway logistics

**#1**  
road network in Europe

**12,000 km** of roads, including  
**497 km** of national roads and  
**613 km** of highways

**French #1**  
**Europe's #2**  
river port

**60** urban ports  
**10** multimodal platforms  
**500 km** of navigable waterways  
**1,000 ha** of port areas  
**6** container terminals

Railway freight relies on **111** freight stations and **640** facilities connected to them.  
 (Setra 2014, Haropa, 2018)

## Very competitive logistics costs

Prime rents in Q2 2018 per year Warehouses over 5,000 m <sup>2</sup> (in €)	
London Heathrow (United Kingdom)	172
Helsinki (Finland)	120
Dublin (Ireland)	100
Munich (Germany)	82
Stockholm (Sweden)	82
Barcelona (Spain)	78
Frankfurt (Germany)	76
Madrid (Spain)	74
Hamburg (Germany)	70
Berlin (Germany)	71
Warsaw (Poland)	64
Amsterdam - Rotterdam (Netherlands)	63
<b>Paris Region (France)</b>	<b>56</b>

Source: European Logistics Market, Property Report, 8/2018 (data Q2 2018)  
 Panel of regions - BNP Paribas Real Estate

## Freight

**Air: 2.20 million** tonnes of cargo  
 (ACI Europe Statistics 2017)

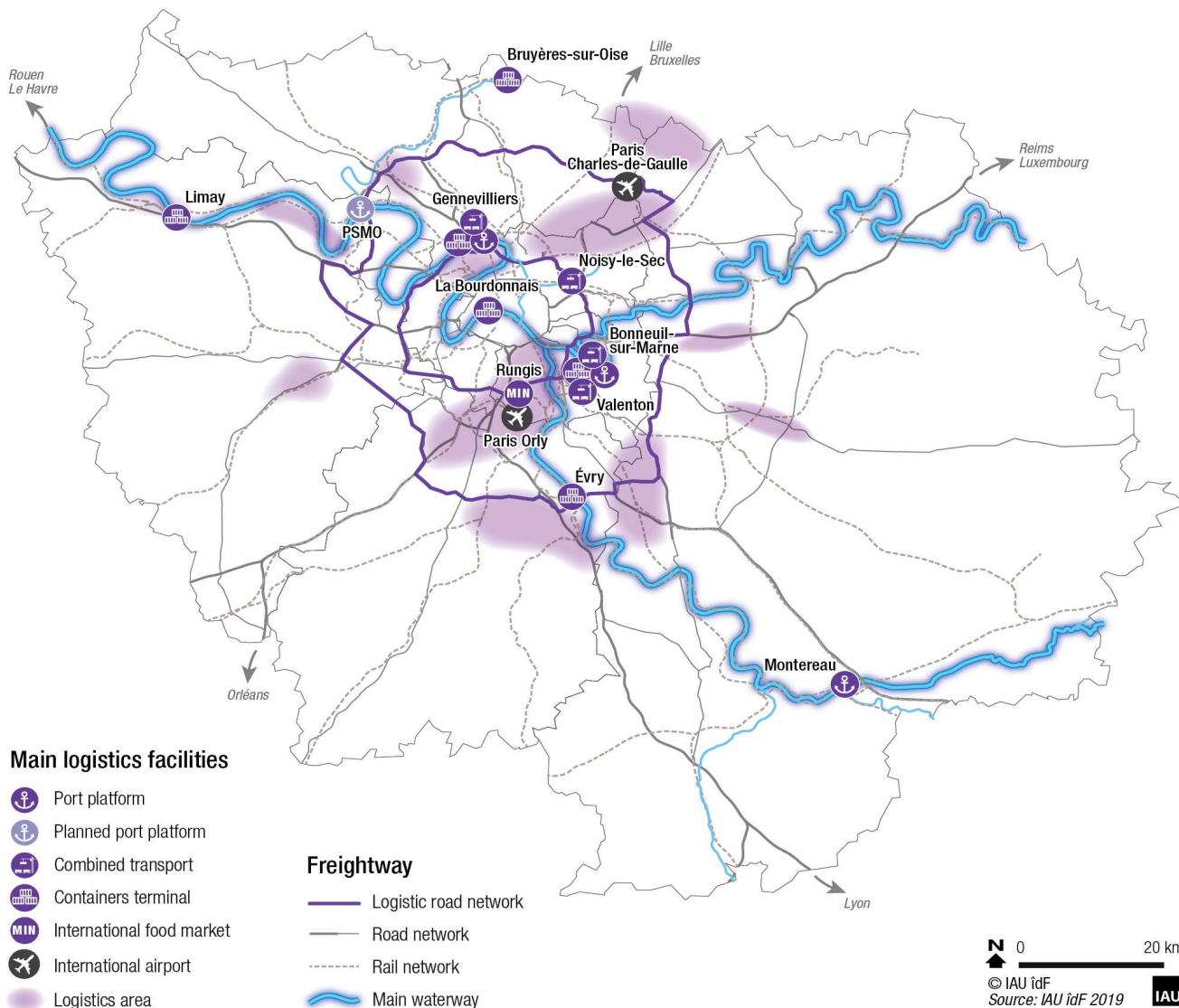
About **90%** of the national cargo is handled at Paris-Charles de Gaulle airport  
 Paris-Charles de Gaulle Airport **#1** in Europe for cargo

**Rail: 10 million** tonnes of goods (estimates DRIEA)

**Waterway: 22.1 million** tonnes of goods (Haropa, 2018)

**Road: 204 million** tonnes of goods (SOEs, TRM survey, 2015)

Logistics in Paris Region



Main logistics facilities

- Port platform
- Planned port platform
- Combined transport
- Containers terminal
- International food market
- International airport
- Logistics area

Freightway

- Logistic road network
- Road network
- Rail network
- Main waterway

N 0 20 km  
 © IAU îdF  
 Source: IAU îdF 2019 IAU

Flow of goods through main ports in Paris Region

	Waterway (thousand tons of goods)	Containers (TEUs*)	Railway (thousand tons of goods)
Gennevilliers	3,635	115,419	550
Limay	1,136	4,090	473
Bonneuil-sur-Marne	1,066	17,672	508
Evry	299	108	-
Bruyères-sur-Oise	198	2,577	-
Précy-sur-Marne	161	5,224	-
Paris-La Bourdonnais	84	16,797	-

\* Twenty-Foot Equivalent Units  
 Source Haropa- Port de Paris, 2018, data 2017

# An outstanding place for events

Paris Air Show © SIAE 2017 - Anthony Guerra - Alex Marc



## An outstanding destination for organizing trade shows

(CCI Paris île-de-France, data 2017)

The #1 offer of exhibition space in the world

**700,000 m<sup>2</sup>**

**700,000 m<sup>2</sup>** of covered exhibition and conference space

**21** exhibition and conference venues

**439** trade shows, including **230** professional trade shows  
**102,472** exhibiting companies, including **29,400** foreign companies (28.6%)  
**8.4 million** visitors, including **602,500** foreigners (7.1%)  
**€4.1b** in economic benefits

**63,800** jobs generated by trade shows  
**€20b** turnover by exhibiting companies at trade shows, of which **€8.5b** realized with foreign customers  
**7 million** contracts concluded at trade fairs

### Top 10 international trade shows held in Paris Region (by numbers of visitors and exhibiting companies)

Trade show Name	Business sector	Visitors (1st visit)	Exhibiting companies	Year
Mondial de l'Automobile / Paris Motor Show	Transport, logistics, traffic and related equipment	1,253,513	240	2014
Salon International de l'Agriculture / Paris International Agricultural Show	Agriculture, horticulture, livestock farming, floristry, fishing and related equipment	637,519	990	2018
Foire internationale de Paris	Multi-sector tradeshow and trade fairs	467,855	2,236	2018
Salon international de l'Aéronautique et de l'Espace / International Paris Air Show	Defence, civil and military security	270,430	2,419	2017
Salon Nautique International de Paris / Paris Boat Show	Tourism, sports and leisure activities	166,297	650	2017
Paris Games Week	Tourism, sports and leisure activities	193,236	176	2017
Maison&Objet	Home decor, interior design architecture and lifestyle culture	164,244	5,412	2017
SIMA, Mondial des Fournisseurs de l'Agriculture et de l'Elevage / Paris International Agribusiness Show	Agriculture, horticulture, livestock farming, floristry, fishing and related equipment	123,378	849	2017
Salon du livre de Paris / Paris Book Fair	Art, culture, music and shows	111,809	883	2017
SIAL Paris, Salon international de l'Alimentation / Inspire Food Business	Food, hotel and restaurant amenities	88,138	6,913	2016

Source: UNIMEV, OJS



Conference and exhibition centers in Paris Region (2019)



**The Paris Convention Center, the largest convention center in Europe**, made-to-measure spaces for large-scale international conferences 15 minutes from the Eiffel Tower, in the heart of the Paris Expo Porte de Versailles Park. It can accommodate up to **35,000** people in gigantic, fully modular spaces.

Over 1,000 conventions per year in Paris Region

(OTCP, 2017)

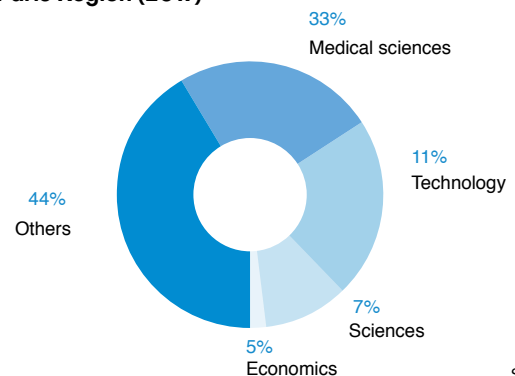
- 1,110 conventions in 351 venues
- 773,100 participants
- 34% were foreign visitors (262,800)
- €1.3b in economic benefits
- 21,500 jobs created by conventions

Paris, the world's # 2 leading destination by number of meetings organized in 2017

Rank	City	# Meetings	# Participants
1	Barcelona	195	148,624
2	Vienna	190	113,891
2	Paris	190	111,725
4	Berlin	185	97,549
5	London	177	78,811
6	Singapore	160	83,762
7	Madrid	153	110,438
8	Prague	151	66,790
9	Lisbon	149	76,549
10	Seoul	142	53,475

Source: ICCA City ranking measured by number of meetings organized in 2017 (12/6/18)

Breakdown of conventions by business sector in Paris Region (2017)



Source: OTCP

# An unforgettable life experience

There's a reason why Paris Region is the #1 destination on the planet: with **50 million** visitors each year, the area is synonymous with "art de vivre", culture, gastronomy and history. The Region is also committed to improving the environment, preserving biodiversity and reducing carbon emissions.

## The world's favorite tourist destinations

**50 million** tourists, including **21.5 million** foreigners (**46%**)  
**179.2 million** night stays, half the total night stays in France, including **92.4 million** for international tourists (**51.5%**)  
**€20.5b** in economic benefits  
**100,000** businesses  
**511,000** jobs

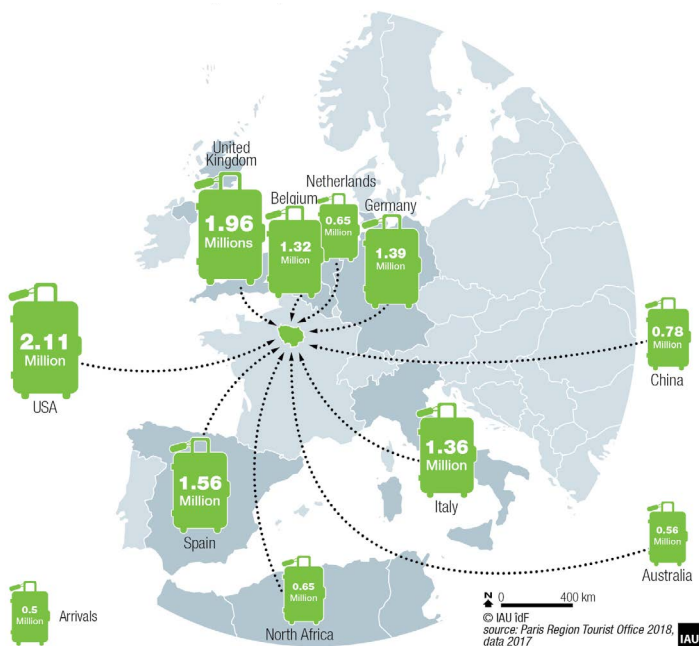
(CRT Paris Île-de-France, 2018, data 2017)

## One of the largest hotel capacities in the world

**156,400** rooms  
**68 million** hotel night stays, half the total night stays in France, including **38.3 million** for international tourists (**56.3%**)  
**2,478** hotels  
**10** luxury hotels

(Insee, data as 01.01.18, CRT Paris Île-de-France, 2018, data 2017)

## Provenance of main foreign tourists in Paris Region (2017)



AdobeStock\_124047231

## Top most visited tourist sites in Paris Region (millions of visitors - 2017)

Disneyland® Paris	14.8
Notre-Dame de Paris*	12
Sacré Cœur de Montmartre*	10
Louvre Museum	8.1
Palace of Versailles	7.7
Eiffel Tower	6.2
Centre Pompidou	3.3
Musée d'Orsay	3.1
Cité des Sciences et de l'Industrie	2.4
Notre-Dame de la Médaille Miraculeuse Chapel*	2.0
National Natural History Museum	1.7
Arc de Triomphe	1.5
Louis Vuitton Foundation	1.4
Grand Palais	1.4
Quai Branly Museum	1.1
Philharmonic of Paris	1.1
Army Museum	1.1
Medieval city of Provins	1.0
Petit Palais	1.1
Sainte-Chapelle	1.0
Musée de l'Orangerie	0.9

\* free admission, estimate Source: CRT Paris Ile-de-France, 2018, data 2017

## A diverse cultural heritage

4,000

historic monuments

140 museums, including 4 of the world's most visited museums: the Louvre, Centre Pompidou, Musée d'Orsay, Cité des Sciences et de l'Industrie  
307 cinemas, 1,073 screens  
361 theaters  
5 opera houses

47 foreign cultural institutes and centers (FICEP)  
5.0 million visitors at the 10 largest exhibitions in Paris in 2017  
1/3 of the regional on the territory is remarkable for its built or landscape heritage  
271 villages of characters

(Insee, CRT Paris Île-de-France, 2018, data 2017)

### Top cultural events in Paris Region (By number of visitors - 2017)

European Heritage Days*	500,000
Techno Parade*	300,000
Solidays	169,000
Medieval Shows in Provins	190,624
Rock en Seine	110,000
International Contemporary Art Fair (FIAC)	73,910
Art Paris Air Fair	54,377

\*free admission, estimate

Source: Repères de l'activité touristique 2018, CRT Paris-Ile-de-France

## A green region

50%

agricultural land

24% forests  
23% cityscape  
1% water  
4 regional nature parks representing 18% of the land area (218,520 ha)  
35 "Natura 2000" sites  
More than 700 sites of ecological interest  
15,171 ha in organic farming

Short food circuits are in place for 800 farms (16%)  
95,820 ha of forest open to the public  
67 sustainable neighborhoods in Paris Region  
113,000 homes programmed within these accredited neighborhoods.  
250,000 inhabitants of the Paris Region should eventually live in one of these exemplary neighborhoods.

A very high level of urban services (water, waste, energy...)

(IAU/MOS 2017, Insee, IAU ÎdF)

## 4 Unesco sites (2018)

Palace of Versailles  
Paris, the Banks of the River Seine

Fontainebleau Château and Park  
Medieval City of Provins



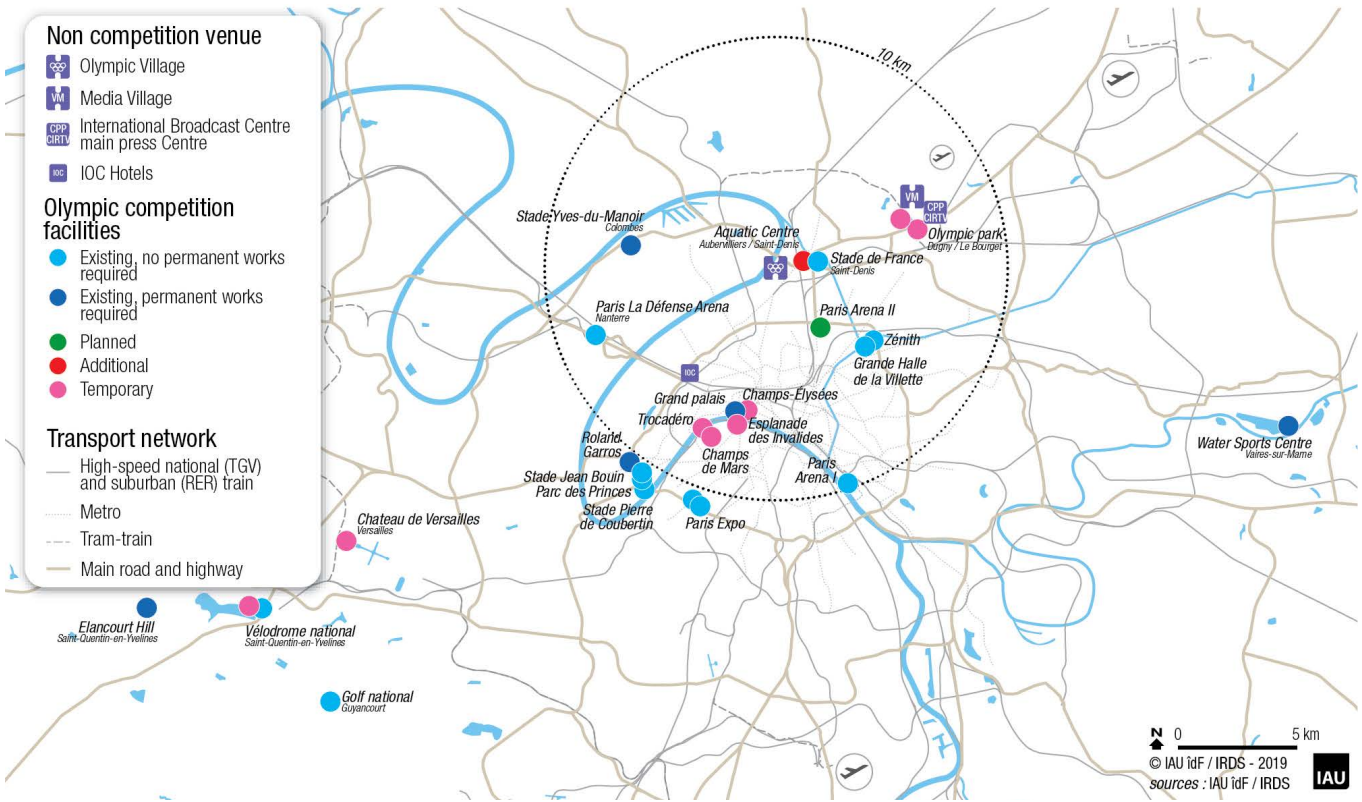
Versailles - The gardens © Christine Tarquis / IAU ÎdF



Nature in Paris Region © Cédric Lavallart / IAU ÎdF



## 2024 Olympic sites in Paris Region



### Great density of sports related facilities (2018)

19,200 sports clubs,  
8,607 sports facilities  
2.5 million sports club members  
12 leisure resorts (3,000 ha)

5,393 tennis courts,  
419 swimming pools  
620 equestrian centers,  
106 golf courses

(Recensement des licences, MEOS, INJEP, saison 2016-2017, RES, Sports Ministry, 2016)

### Some popular sporting events (2017/18)

Tour de France (cycling race):  
545,000 spectators  
Paris Open, Roland-Garros  
(Tennis): 472,000 spectators  
Ryder Cup (golf): 300,000 spectators

Paris Marathon: 57,000 participants, 250,000 spectators  
NatWest 6 Nations  
Championship (rugby): 150,000 spectators

(Repères de l'activité touristique 2018, CRT Paris-Ile-de-France, Estimates IRDS, FF Golf, Schneider Electric Marathon, L'Equipe)

### Events 2019

European Men's Volleyball  
Championship, April 2019  
Women's World Cup,  
June-July 2019  
BMX World Cup, June 2019

European and World  
Skateboard Bowl  
Championships, June-July 2019  
Athletics - Paris-St-Denis  
Meeting Areva, August 2019  
Tennis - Masters 1000 - Paris-  
Bercy, Oct-Nov 2019

### Paris 2024 Olympic and Paralympic Games

Olympic Games:  
July 26th - August 11th,  
2024

Paralympic Games:  
August 28th -  
September 8th, 2024

#### Venues

95% existing or temporary facilities  
1 sports venue to be built specifically for the Games: the Aquatics Center in Saint-Denis  
80% of venues located within a 10 km radius of the Village  
22 sports within a 10 km radius of the Village  
90,000 hotel rooms within 10 km of the city center

#### Sustainable

55% smaller carbon footprints than London 2012

#### Travel

85% of athletes accommodated within 30 minutes of their competition venue  
30% of athletes accommodated within 5 minutes of their competition venue (Stade de France and Aquatics Center)  
100% of training venues (excluding competition venues) within 20 minutes of the Village  
100% of venues accessible by environmentally friendly public transport  
400 meters maximum distance to a metro station from any location in Paris

(Paris2024 media)



## The world capital of shopping (2018)

220 shopping centers, including the recently renovated Forum des Halles, Vill'Up, the Carrousel du Louvre, Beaugrenelle, Bercy Village, La Vallée Village.

14 major department stores: Galeries Lafayette, Printemps, Le Bon Marché, BHV, etc.

(Sources : Sites commerciaux n°281, Septembre 2018, Panorama/tradedimensions, Le guide 2019 de la distribution and IAU idF)

The commercial center Les Quatre Temps-Le CNIT (La Defense), #1 French and European shopping destination 57 million visitors in 2017

2 Paris region shopping centers are among europa's top 5 centers (annual footfall, in million visitors 2017, \*2016)

Les Quatre Temps/Le CNIT* (La Défense, Paris Region, France)	57.0
Westfield Stratford City (London, United Kingdom)	49.5
Forum des Halles (Paris Region, France)	42.3
Bullring (Birmingham, United Kingdom)	36.9
La Part-Dieu (Lyon, France)	35.6

(Source: Sites commerciaux n° 281, septembre 2018, \*2016)

## A gastronomic destination (2018)

Rungis International Market, the world's biggest fresh produce market  
 9 billion euros turnover  
 18 million consumers  
 1,200 companies  
 6,710,450 visitors  
 1,726,000 tonnes of food products

(Rungis)

5,600 m<sup>2</sup>

the largest organic market in Europe

### Specialities produced in Paris Region

1,000 products and 70 kinds of fruits and vegetables

Many culinary products are the richness of the region: Bries de Meaux and Melun, coulommiers, Vexin beer, Gâtinais honey and saffron, rose petal confit from Provins, peppermint from Milly-la-Forêt, poultry from Houdan or Grand Marnier.

Cervia

Several varieties of fruits and vegetables take their name from their place of production: Argenteuil asparagus, Arpajon beans, Belle de Fontenay potatoes, mushrooms and hams, Montmorency cherries, Pontoise cabbage, Marcoussis strawberries.

Paris Region is the leading French region for the production of parsley, watercress and radishes. It ranks 2nd for fava beans, 3rd for peas and 4th for beets, lettuce or pumpkins.



Printemps department store - Terrace © Romain Ricard

22,763

restaurants

131 Michelin-starred restaurants, including 16 2-stars and 9 3-stars

Guide Michelin





© Ville d'Enghien-les-Bains - Ferrandi School © Aurelia Blanc-CCI Paris Ile-de-France - Axe majeur in Cergy - Pontoise - Grafitti © Jarry-Tripelon/CRT Paris-Ile de France - Ride in Paris © Paris Tourist Office / Amélie Dupont - Conflans-Sainte-Honorine © CRT IDF / Tripelon-Jarry - Collective Scientific Projects © Ecole Polytechnique / J. Barande - Boucles de la Seine - Vexin français © CRT IDF / Tripelon-Jarry

Please do not hesitate to send us your comments and suggestions to improve this new edition: [prkf@parisregionentreprises.org](mailto:prkf@parisregionentreprises.org)

We thank all the organizations and individuals from whom we have been able to retrieve the data used in producing this document: ACI Europe, APUR, Arafer, ARWU, ASTech, AT.Kearney, BNP Paribas Real Estate, Cap Digital, CBRE, Cervia, Colliers International, Paris Ile-de-France CCI, Cosmetic Valley, CRT Paris Ile-de-France, Cushman & Wakefield, Diane, DRIEA, Educsol, Elastopole, Elsevier/Scopus, Eurostat, Expatistan, Ficop, Finance Innovation, Financial Times, FNAK, Fortune Magazine, French Customs, Guide Michelin, Haropa - Ports de Paris, IAU île-de-France, ICCA, Ile-de-France Mobilités, Immostat, INJEP, INPI, INSEE, IRDS, KPMG, Medicen, Mercer, Mov'eo, Ministry of Education, Higher Education and Research, OJS, OLAP, OMPi, ORIE, OST, OTCP (Paris Convention and Visitors Bureau), Panorama/tradedimensions, Paris2024 media, Paris Aéroport, Paris Region Entreprises, QS Quacquarelli Symonds, RATP, Rungis, Sites commerciaux, Société du Grand Paris, SNCF, Systematic, Times Higher Education, Unesco, UNIMEV, Veilb Metropole.

**Editorial Board:**

IAU île-de-France: Vincent Gollain, Christine Tarquis  
 Paris Ile-de-France Regional Chamber of Commerce and Industry: Yves Burfin, Isabelle Savelli  
 Paris Region Entreprises: Florence Humbert  
 Maps: Pascale Guéry, IAU île-de-France  
 Graphic design: Kevin Ramanakasina, Florence Humbert  
 English: Alexander Kutler  
 Printed in March 2019 by Jouve, 53100 Mayenne, France

© Paris Ile-de-France CCI - IAU île-de-France - Paris Region Entreprises  
 ISSN: 1958-1270

# WHY PARIS REGION ?

A dynamic and forward-looking region. The Paris Region is a truly global region with a population of 12 million. More than 60% of residents are under the age of 40. This young and steadily growing population is not only attracted by the region's economic opportunities but also by the quality of life offered. Indeed, economic and demographic indicators point to a bright future for the region's development.

## WHAT WE DO

We help companies discover the market and provide a 360° crash course on doing business in France. Our personalized services include setting up your company, opening a bank account, finding your ideal office space, recruiting top talent, relocating your international staff, navigating the administration, and identifying financial partners.

## WHO WE ARE

As the premier business and innovation catalyst supporting international companies with their development in the Paris area, we're here to guide you and provide peace of mind as you set up operations in this dynamic ecosystem.



@parisregion



@ParisRegionNow



ParisRegionChannel



invest-paris-region





**IAU ÎLE-DE-FRANCE**

# PARIS REGION URBAN AND ENVIRONMENTAL AGENCY

## **We help build sustainable cities**

Digital transition, climate change, urban resilience, smart mobility, innovative ecosystems, sustainable development, collaborative economy, real estate... In a fast-changing world, IAU's 200 experts explore all dimensions of regional and metropolitan living to help local decision-makers improve the quality of life and plan for the future. Financed by Paris Region's authorities, IAU is Europe's largest urban agency and is active worldwide.

## **Our resources**

Open data resources, interactive maps or collaborative Wikimaps: all IAU publications are available online.



[www.iau-idf.fr/en](http://www.iau-idf.fr/en)



**IAU ÎLE-DE-FRANCE**

NON-PROFIT ASSOCIATION

15, RUE FALGUIÈRE - 75740 PARIS CEDEX 15 FRANCE

PHONE : +33 (0)1 77 49 77 49







# Expanding your network, boosting growth

with Paris Ile-de-France Regional Chamber  
of Commerce and Industry

Are you a foreign company?  
Are you looking for potential business partners  
on the French market?



Doing Business  
in Paris

is at your service

[doingbusinessinparis.com](http://doingbusinessinparis.com)

crédit photo Fotolia - Création Lonsdale

0 820 012 112

Service 0,12 € / min  
+ prix appel

[international.cci-paris-idf.fr](http://international.cci-paris-idf.fr)



CCI PARIS ILE-DE-FRANCE

